



Intertek



BC
CONDUIT



CABLE MANAGEMENT SYSTEM CONDUITS, FITTINGS & ACCESSORIES

SaudiFastGrowth **100**
Real Companies, Real Growth, Real Success



ISO 9001:2008
American Systems Registrar
Certificate No: 5107



INTERTEK ETL SEMKO
Conduit Systems: Medium Duty
Sizes: 20/25/32/50 mm
Test Report Ref: 1301827-1



INTERTEK ETL SEMKO
Conduit Systems: Heavy Duty
Sizes: 20/25/32/50 mm
Test Report Ref: 1301827-2



INTERTEK ETL SEMKO
Conduit Systems: Extra Heavy Duty
Sizes: 20/25/32/50 mm
Test Report Ref: 1301827-3



S INTERTEK
Certification for
Medium, Heavy & Extra Heavy Duty Conduits
Certificate Ref: 1301827



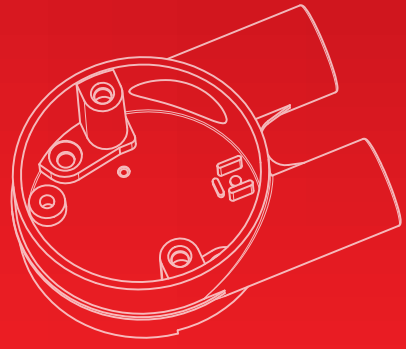
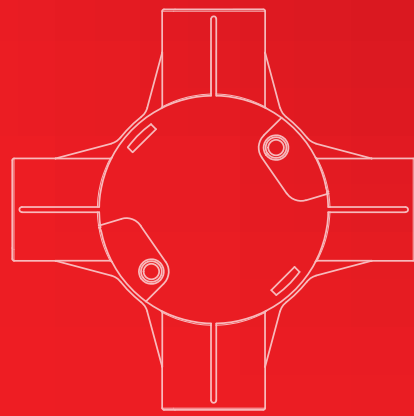
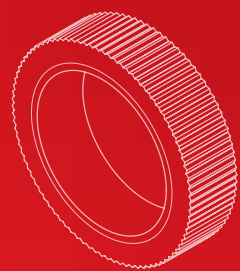
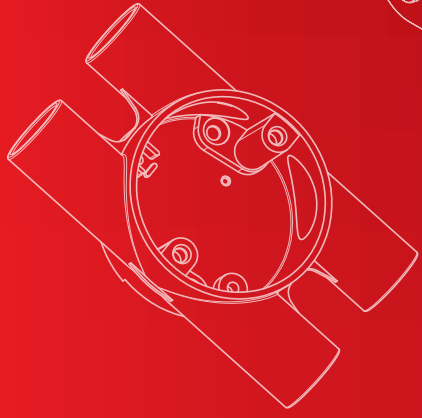
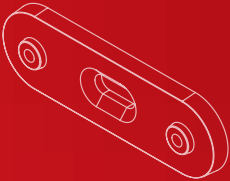
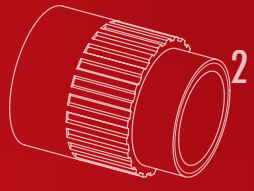
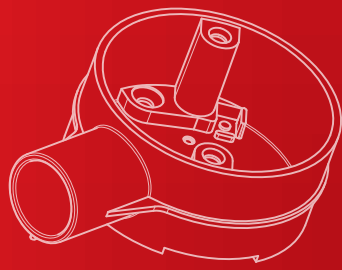
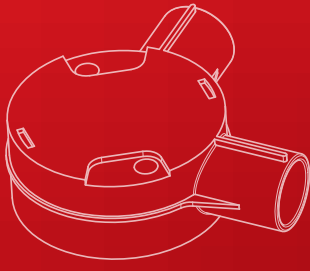
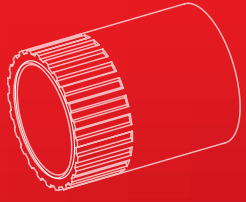
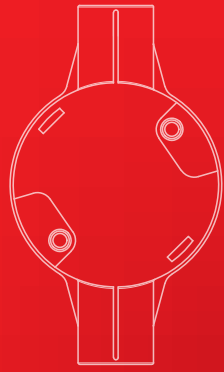
S INTERTEK
Certification for
Junction Boxes
Certificate Ref: 1313485



UL CERTIFICATION
For SCH 40 Rigid PVC Conduits according to UL 651
Certificate Ref. : E471489



S INTERTEK
Certification for
Fittings & Accessories for Conduits
Certificate Ref: 1313493



BC CONDUIT CONTENTS

INTRODUCTION

IEC, BRITISH & EUROPEAN SYSTEM
TECHNICAL INFORMATION
IEC, BS & EN CONDUIT SYSTEM

DIN STANDARD

AMERICAN STANDARD

CARLON
CONDUIT ACCESSORIES

METALLIC SWITCH BOXES

PACKAGING & STORAGE

2

7

8

25

38

57

62

65



GENERAL

INTRODUCTION



BC Conduit was established in 2013 to serve Saudi & MENA Market. It is based inside Bahra Cables Company, located 25 km from Jeddah.

BC Conduit started production of a variety of high quality polyvinyl chloride and unplasticised polyvinyl chloride (PVC & UPVC) compound in its state-of-the-art factory, which has an annual output capacity of over 36,000 tons. The company has the flexibility to produce a versatile range of PVC & UPVC products, to serve the construction and electrical utilities. The produced conduits and accessories comply with the American standards (NEMA and UL), European standards (IEC, BS and DIN) and Saudi and Gulf Standards (SASO and GSO).

The company sources PVC & UPVC feedstock from Saudi Basic Industries Corporation (SABIC) to produce the granule, also used for jacketing and insulating the cables. SABIC is one of the world's largest manufacturers of PVC & UPVC and the sole producer in Saudi Arabia.

The factory built with the expertise of Buss Company of Switzerland, is completely integrated and equipped with the latest technologies in the field.

The ability to manufacture UPVC compounds improves Bahra Cable Company's control over the material used in its cable and wire production, reduces product cost and adds higher performance values to its products.

The new factory also eliminates the need for local sourcing of PVC & UPVC compounds, ensures superior quality production of cables and creates more career opportunities in the region at the same time.

AREA

Bahra Cables Company has a total land area of about 500,000sqm at disposal. The built-up area, including offices and plant, is more than 100,000sqm.

MATERIAL INTRODUCTION

Polyvinyl Chloride, commonly known as PVC, was first recognized and characterized more 110 years ago, but due to its poor thermal stability making processing difficult, it was potentially introduced to the market only by 1930.

The problem caused by poor thermal stability were overcome by development of suitable stabilizers systems and PVC is now one of the world's leading synthetic polymer having very diverse applications.

The ability to change its properties, by the addition of plasticisers, from a hard rigid material to one that is soft and flexible enables a wide variety of processing equipment to be used to produce an almost limitless range of products to a thick cream.

UPVC is used for the production of extrusions and molding. And it is universally accepted as having the most suitable properties for use within the electrical industry.

BC Conduit Standards

BC Conduit PVC & UPVC products are manufactured in accordance with European (IEC, BS and DIN) standards, American standards (NEMA and UL) and Saudi and Gulf standards (SASO and GSO).

IEC 60423:	Conduit Systems for cable management – Outside diameters of conduits for electrical installations and threads for conduits and fittings.
BS EN 61386-1 IEC 61386-1:	Conduit systems for cable management — Part 1: General requirements
BS EN 61386-21 & IEC 61386 -21:	Conduit systems for cable management - Part 21: Particular requirements - Rigid PVC conduit systems.
BS EN 60670-1 2005 A 2013 & IEC 60670-1:	Boxes and enclosures for electrical accessories for household and similar fixed electrical installations

NOTE:

BS 6099-1:1981 was superseded with BS EN 50086-1:1994 which also withdrawn and superseded with BS EN 61386-1:2004 which also replaced by BS EN 61386-1:2008.

BS 6099-2-2.2:1982, IEC 60614-2-2:1980 was superseded with BS EN 50086-2-1:1996 which also withdrawn and replaced by BS EN 61386-21:2010 SASO 254/255 was replaced by SASO / IEC 61386-1 & SASO / IEC 61386-21.

NEMA TC2:	Electrical Polyvinyl Chloride Rigid (PVC) Conduit.
NEMA TC 6 & 8-2013:	Polyvinyl Chloride (PVC) Plastic Utilities Duct for Underground Installers.
NEMA TC 3:	Polyvinyl Chloride (PVC) Fittings for Use with Rigid PVC Conduit and Tubing For NEMA TC 2
NEMA TC 9:	Fittings for polyvinyl chloride (PVC) plastic utilities duct for underground installation for NEMA TC 6 & 8.
Regulations:	Bahra System complies with all the relevant requirement of the latest edition of the BS 7671 (IEE Wiring Regulations).
UL 651:	Schedule 40, 80, Type EB, DB and A Rigid PVC Conduit and Fittings.
GSO 32/2007:	Methods of testing plastic conduits and fitting for electrical installations.
GSO 33/2007:	Plastic conduits and fittings for electrical installations
SASO 14 (GS 675) DIN 8061/8062:	Unplasticized Polyvinyl Chloride (UPVC) Pipes Class 2, 3 & 4 & Class 5
SASO 15 (GS 676)	Methods of testing of Unplasticized Polyvinyl Chloride (UPVC) Pipes Class 2, 3, 4, & Class 5
BS-3506	Rigid PVC Pipes Class B & Class C & O for Industrial uses.
IEE Wiring Regulations:	Bahra System complies with all the relevant requirement of the latest edition of the BS 7671 (IEE Wiring Regulations).



**SPECIAL ACHIEVEMENT AWARD
FROM KING ABDUL AZIZ UNIVERSITY
FOR SCIENCE & TECHNOLOGY FOR
THE DEVELOPMENT & RESEARCH OF
TELESCOPIC EXPANSION**

PRODUCT CERTIFICATIONS AND APPROVALS



Certified by American Systems Registrar (ASR).



BC Conduit is certified for European Product Safety  for the following products:

- Medium, heavy and extra heavy duty grade type conduits
(Ref. 1301827-1, 1301827-2, 1301827-3)
- Fittings and accessories for conduits (Ref. 1313493)
- Junction Boxes (Ref. 1313485)



BC Conduit's with SASO quality mark.



BC Conduit satisfies provisions for CE marking,  according to Low Voltage Directive 2006/95/EC.

BC Conduit's conduits & accessories are resistant to external influences according to following IP Codes:

- | | |
|--|------|
| • Extra Heavy duty conduits and accessories | IP66 |
| • Heavy and Medium duty conduits and accessories | IP55 |
| • Junction Boxes | IP50 |



Schedule 40, File no: E471489 Rigid PVC Conduits According to UL651



Approved Supplier with Aramco Vendor Code 10054650 with 9COM (600000811)



Official Distributor for Conduit Accessories.



INTRODUCTION

CUSTOMER SATISFACTION:

Our Main objective is to provide quality products with exceptional quality assurance and excellence in customer service.

BC CONDUIT TECHNICAL TEAM:

The manufacture of high quality PVC & UPVC pipes requires a high degree of technical skills. BC Conduit has highly qualified technical team for any support to satisfy client and consultant.

ADVANTAGES WITH BC CONDUIT PRODUCTS

LIGHT WEIGHT AND EASY TO INSTALL

Weight less than 1/5 as much as steel and 1/2 as much as aluminum it means quick, easy installation, labor saving and reduced total job time

NON CORROSIVE

Since PVC can't corrode & is not affected by concrete additives, electrolysis, corrosive atmosphere, soils salts or excessive humidity. Hence services life under these conditions is far superior to that of other conduit materials.

FIRE RESISTANT

PVC is a thermoplastic material that inherently resists continuous combustion. It is classified as self-extinguishing when tested to ASTM D 635.

NON MAGNETIC

PVC is non magnetic, thus it reduces voltage drop and minimizes power loss.

RELIABLE JOINTS AND EASY IN PULLING THROUGH

Installation is simple, fast with solvent cement joints, Bahra conduit requires no threading. Its smooth enough, uniform interior walls make wire pull through faster and easier.

SAFETY

PVC conduits is non conductive and non-sparking. PVC conduits eliminate the dangerous second point of contact and phase to ground faults.

ASSEMBLY

All that is required to join your BC fittings with BC conduit is BSG solvent cement.

STRENGTH

Conduits & Fittings offer both high impact and high tensile strength.

CORROSION RESISTANT

PVC is resistant to external corrosion and pitting and will not rust. This ensures a lower maintenance cost and a longer performance life.

NON-CONDUCTIVE

PVC eliminates the most dangerous second point of contact in phase to ground faults. The use of a separate grounding conductor gives a complete and positive ground for the entire system.

CHEMICAL RESISTANT

Conduits & BC Fittings are resistant to a wide range of chemicals such as acids, alkalis or salt solutions.

TECHNICAL INFORMATION

IEC, BS & EN STANDARDS

UPVC PROPERTIES

PROPERTY	ASTM TEST METHOD	UNIT	VALUE
General Properties:			
Density	D-792	gm/cm ³	1.40 - 1.55
Water Absorption	D-570/Proc. A	%	Max ±0.03
Mechanical Properties:			
Tensile Strength, Ultimate	D-638	kg/cm ²	421.1
Modulus of Elasticity	D-638	psi	400000
Flexural Strength	D-790	Mpa	80
Hardness	D-785	Shore D	90
Izod Impact Strength	D-256	J/M	27-81
Thermal Properties:			
Heat Deflection Temp.	D-648 (Load 0.455 MPa)	°C	84.44
Vicat Softening Temp.	D-1525 (Rate B)	°C	84
Co-efficient of Thermal Expansion	D-696	mm/m/10°C	3 x 10 ⁻⁶
Thermal Conductivity	C-177	W/(°Km)	0.19
Flammability Properties:			
Flammability	D-635	Resistance	Self extinguishing within 30s
Extent of Burning	D-635	mm	<50
Flammability Rating	UL-94	rating	V-O
Electrical Properties:			
Volume Resistivity	D-257	ohm.cm	3.23x10 ¹²
Surface Resistance	D-257	ohms	> 10 ¹²

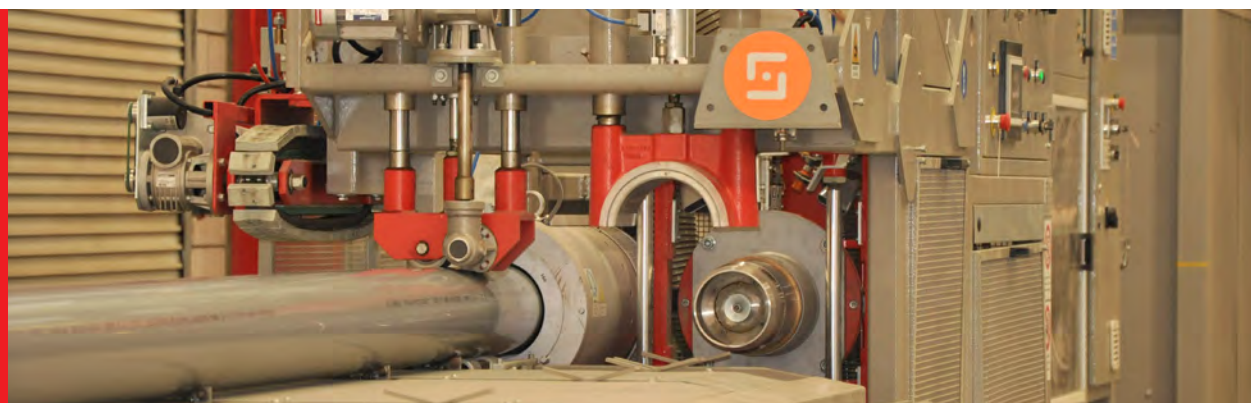


TECHNICAL INFORMATION

AMERICAN STANDARDS

UPVC PROPERTIES

PROPERTY	ASTM TEST METHOD	UNIT	VALUE
General Properties:			
Density	D-792	gm/cm ³	1.47 ±0.03
Water Absorption	D-570/Proc. A	%	Max ±0.03
Mechanical Properties:			
Tensile Strength, Ultimate	D-638	kg/cm ²	492
Modulus of Elasticity	D-638	psi	400000-500000
Flexural Strength	D-790	Mpa	80
Hardness	D-785	Shore D	90
Izod Impact Strength	D-256	J/M	27-81
Thermal Properties:			
Heat Deflection Temp.	D-648 (Load 0.455 MPa)	°C	85
Vicat Softening Temp.	D-1525 (Rate B)	°C	84.93
Co-efficient of Thermal Expansion	D-696	mm/m/°C	4.5 x 10 ⁻⁶
Thermal Conductivity	C-177	W/(°Km)	0.19
Flammability Properties:			
Flammability	D-635	Resistance	Self extinguishing
Extent of Burning	D-635	mm	<25
Flammability Rating	UL-94	rating	V-O
Electrical Properties:			
Volume Resistivity	D-257	ohm.cm	3.4x10 ¹²
Surface Resistance	D-257	ohms	> 10 ¹²



PRODUCT LIST OF MATERIAL

List of Products:

- Extra Heavy Duty UPVC Conduit
- Heavy Duty UPVC Conduit
- Medium Duty UPVC Conduit
- Light Duty UPVC Conduit
- Standard Coupling
- Expansion Coupling
- Bend Heavy Duty With Bell Ends
- Bend Light Duty With Bell Ends
- Round Spring Clips
- Female Adapter /Double
- Male Adapter
- Bushing for Female Adapter
- Adaptable Boxes
- Metallic Boxes
- UPVC Cement
- Lock Nut
- Lock Ring For Male Adapter
- Strap Saddles
- Saddle with Base
- Telescoping Double Tube Expansion Coupling
- Loop in Box
- Reducers
- Terminal One Way Box & Back Outlet
- Through Two Way Box & Back Outlet
- Angle Two Way Box & Back Outlet
- U Two Way Box & Back Outlett
- Tee Three Way Box & Back Outlet
- Intersection Four Way Box & Back Outlet
- H Four Way Box & Back Outlet-
- Circular Lids
- Rubber Gasket
- Circular Extension Ring
- Bending Springs
- Rigid PVC Conduits (NEMA TC2)
- Fabricated Couplings & End Bells (NEMA TC3)
- Type EB20 (NEMA TC6 & 8)
- Type EB35 (NEMA TC6 & 8)
- Type DB60 (NEMA TC6 & 8)
- Type DB120 (NEMA TC6 & 8)
- All Fittings (NEMA TC9)
- Class 2 (SASO)
- Class 3 (SASO)
- Class 4 (SASO)
- Class 5 (SASO)
- UPVC Elbows (SASO) 90deg & Different Angels
- Male Terminal Adapter
- Expansion Fittings
- End Bells
- End Caps
- Intermediate Spacers,Base Spacers
- BS-3506 Conduit & Fittings



**IEC, BRITISH & EUROPEAN
STANDARD**

**TECHNICAL INFORMATION
IEC, BS & EN STANDARDS**

CONDUIT (ROUND SECTION HEAVY GAUGE HIGH IMPACT)

For classic conduit installation this provides a high degree of fortification or safety.

Temperature range: -5°C to 60°C (Minimum and Maximum), complies with BS EN/ IEC 61386-1 section 6.6.

BC Conduits can comply up to 75°C as tested by Bahra QC department.

Heavy Mechanical Stress (Section 2.2) complies with all related requirements of 16th edition of IEE Wiring Regulation and provides high degree of fortification or safety.

Outside θ (mm)	W.Thickness (mm)	Weight (kg/m)	Cross Section Area(mm ²)
20	1.8	0.163	103
25	1.9	0.219	138
32	2.5	0.367	232
38	2.5	0.442	278
50	3.2	0.747	470

Conduits, Grades, Area and Weights

BC conduits are manufactured and tested as per IEC / EN 61386 (previously BS 6099) to withstand a wide range of impact and compression forces starting with Light Duty (2221), Medium Duty (3321) for flush and service applications, Heavy Duty (4421) for ceiling and wall installations, and Extra Heavy Duty (5521) for installation inside bulk concrete in temperature range of -5°C to 60°C.

The following table shows the Nominal Dimensions of each type:

Outside Diameter (mm)	Light	Medium	Heavy	Light	Medium	Heavy
	Nominal Thickness (mm)			Internal Area (mm ²)		
20	1.2	1.6	1.8	243	222	211
25	1.4	1.8	1.9	387	360	353
32	1.5	2.1	2.5	660	607	573
38	1.5	2.2	2.5	962	887	855
50	1.9	2.5	3.2	1590	1590	1493

Note: Extra Heavy Duty also available



Ref: 1301827

2006/95/EC
Low Voltage Directive

IEC, BS & EN CONDUIT SYSTEM

EXTRA HEAVY DUTY UPVC CONDUIT * | IEC CODE 5521 4000N

Item Code	Nominal Size (O.D.)	Standard Packs		Bulk Packs
		Pcs	Mtrs	Pcs
BEP-2	20	50	145	4550
BEP-3	25	25	72.5	3000
BEP-4	32	20	58	1800
BEP-5	38	20	58	1300
BEP-6	50	5	14.5	720

HEAVY DUTY UPVC CONDUIT * | IEC CODE 4421 1250N

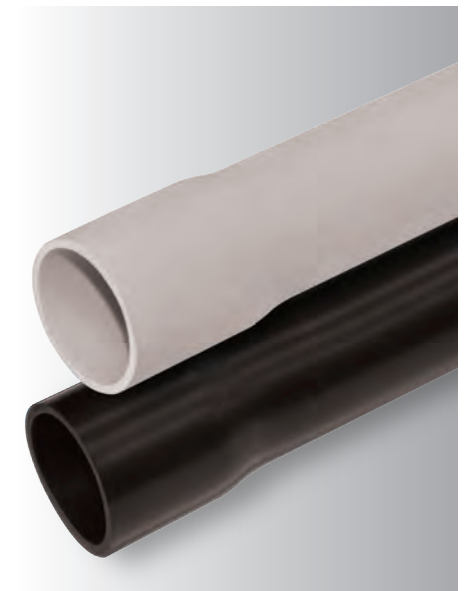
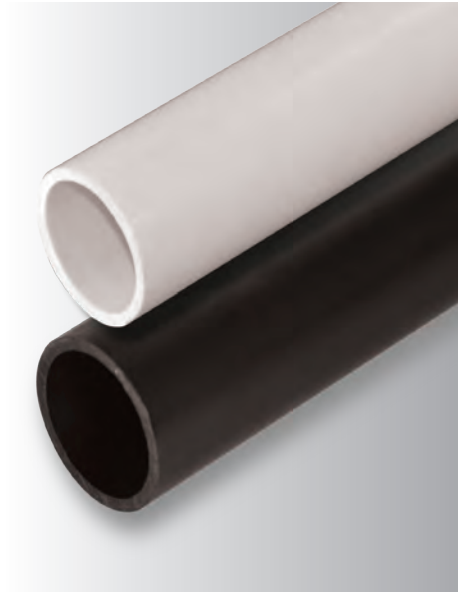
Item Code	Nominal Size (O.D.)	Wall Thickness	Standard Packs		Bulk Packs
			Pcs	Mtrs	Pcs
BSP-2	20	1.8	50	145	4550
BSP-3	25	1.9	25	72.5	3000
BSP-4	32	2.5	20	58	1800
BSP-5	38	2.5	20	58	1300
BSP 6	50	3.2	5	14.5	720

MEDIUM DUTY UPVC CONDUIT * | IEC CODE 3321 750N

Item Code	Nominal Size (O.D.)	Wall Thickness	Standard Packs		Bulk Packs
			Pcs	Mtrs	Pcs
BMP-2	20	1.6	50	145	4550
BMP-3	25	1.8	25	72.5	3000
BMP-4	32	2.1	20	58	1800
BMP-5	38	2.2	20	58	1300
BMP 6	50	2.5	5	14.5	720

LIGHT DUTY UPVC CONDUIT * | IEC CODE 2221 320N

Item Code	Nominal Size (O.D.)	Wall Thickness	Standard Packs		Bulk Packs
			Pcs	Mtrs	Pcs
BLP-2	20	1.2	50	145	4550
BLP-3	25	1.4	25	72.5	3000
BLP-4	32	1.5	20	58	1800
BLP-5	38	1.5	20	58	1300
BLP 6	50	1.9	5	14.5	720



All pipes are also available with sockets

NEW

All pipes are also available with sockets

NEW

* Manufactured according to BS 6099, EN 61386 (IEC 61386), part 1 & 21 standard length 2.9m. Other lengths available on request.

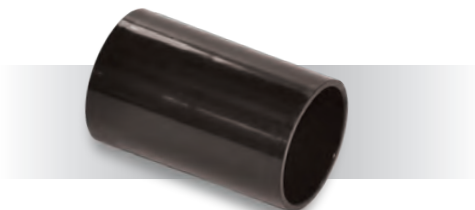
*All above are available in 2 colors: Black and White. When ordering, use color suffix BK WT with socket please mention 's' at the end of part number.



IEC, BS & EN CONDUIT SYSTEM

STANDARD COUPLING

Item Code	Size (mm)	Standard Packs	Bulk Packs (Pcs)
BSC 2	20	100	20,000
BSC 3	25	100	10,000
BSC 4	32	25	5,000
BSC 5	38	25	2,500
BSC 6	50	20	2,000



EXPANSION COUPLING

Item Code	Size (mm)	Standard Packs	Bulk Packs (Pcs)
BEC 2	20	50	800
BEC 3	25	25	625
BEC 4	32	20	260
BEC 5	38	10	250
BEC 6	50	10	120



* TELESCOPING DOUBLE TUBE EXPANSION COUPLING

Item Code	Size (mm)	Standard Packs	Bulk Packs (Pcs)
BTEC2	20	60	6,000
BTEC3	25	50	5,000
BTEC4	32	25	2,500
BTEC5	38	15	300
BTEC6	50	50	900



SPECIAL ACHIEVEMENT AWARD
FROM KING ABDUL AZIZ UNIVERSITY
FOR SCIENCE & TECHNOLOGY
FOR THE DEVELOPMENT & RESEARCH OF
TELESCOPIC EXPANSION

FEMALE ADAPTERS

Item Code	Size (mm)	Standard Packs	Bulk Packs (Pcs)
BFA 2	20	100	20,000
BFA 3	25	100	10,000
BFA 4	32	50	5,000
BFA 5	38	25	5,000
BFA 6	50	20	3,000



MALE ADAPTERS

Item Code	Size (mm)	Standard Packs	Bulk Packs (Pcs)
BMA 2	20	100	20,000
BMA 3	25	100	20,000
BMA 4	32	50	10,000
BMA 5	38	25	5,000
BMA 6	50	20	2,000



All above products available in 2 colors: Black and White. When ordering use color suffix BK WT

BAHRA DOUBLE FEMALE ADAPTER

Item Code	Size (mm)	Standard Packs	Bulk Packs (Pcs)
BDFA 2	20	100	20,000
BDFA 3	25	100	20,000



BUSHING FOR FEMALE ADAPTER

Item Code	Size (mm)	Standard Packs	Bulk Packs (Pcs)
TBM 2	20	1000	100,000
TBM 3	25	500	50,000
TBM 4	32	100	2600
TBM 5	38	50	2000
TBM 6	50	25	1000



LOCK RING FOR MALE ADAPTER

Item Code	Size (mm)	Standard Packs	Bulk Packs (Pcs)
TLF 2	20	1,000	100,000
TLF 3	25	1,000	100,000
TLF 4	32	200	20,000
TLF 5	38	200	20,000
TLF 6	50	100	10,000



ROUND SPRING CLIPS

Item Code	Size (mm)	Standard Packs	Bulk Packs (Pcs)
BCC 2	20	200	5200
BCC 3	25	100	4000



BENDS-HEAVY DUTY WITH BELL ENDS

Item Code	Size (mm)	Standard Packs	Bulk Packs (Pcs)
BHB 2	20	30	3,000
BHB 3	25	15	1,500
BHB 4	32	100	600
BHB 5	38	75	360
BHB 6	50	40	150



BENDS-HEAVY DUTY WITH COUPLINGS

Item Code	Size (mm)	Standard Packs	Bulk Packs (Pcs)
BNB 2	20	30	3,000
BNB 3	25	15	1,500
BNB 4	32	100	600
BNB 5	38	60	360
BNB 6	50	25	150



*Note: 45° also manufactured as per request

REDUCERS

Item Code	Size (mm)	Standard Packs	Bulk Packs(Pcs)
BRC 2/3	25/20	100	20,000
BRC 3/4	32/25	100	10,000



BAHRA REDUCERS BUSH

Item Code	Size (mm)	Standard Packs	Bulk Packs (Pcs)
BRB 2/3	25/20	100	20,000
BRB 3/4	32/25	100	20,000



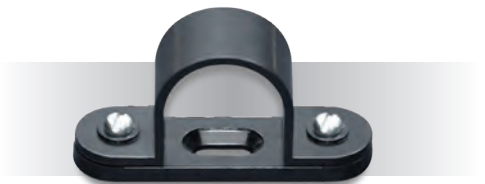
STRAP SADDLES

Item Code	Size (mm)	Standard Packs	Bulk Packs (Pcs)
BPS 2	20	200	40,000
BPS 3	25	200	40,000
BPS 4	32	100	20,000
BPS 5	38	25	2000
BPS 6	50	25	1300



SADDLE WITH BASE

Item Code	Size (mm)	Standard Packs	Bulk Packs (Pcs)
BSB 2	20	100	20,000
BSB 3	25	100	20,000
BSB 4	32	100	10,000
BSB 5	38	25	2,500
BSB 6	50	25	2,500



LOOP IN BOX

Item Code	Size (mm)	Standard Packs	Bulk Packs (Pcs)
2/BRB/1	20 K.O.(4)	30	6,000
3/BRB/1	25 K.O.(4)	30	6,000



TERMINAL - ONE WAY BOX

Item Code	Size (mm)	Standard Packs	Bulk Packs (Pcs)
2/BRB/2	20	25	2,500
3/BRB/2	25	25	2,500



THROUGH - TWO WAY BOX

Item Code	Size (mm)	Standard Packs	Bulk Packs (Pcs)
2/BRB/3	20	25	2,500
3/BRB/3	25	25	2,500



ANGLE - TWO WAY BOX

Item Code	Size (mm)	Standard Packs	Bulk Packs (Pcs)
2/BRB/4	20	25	2,500
3/BRB/4	25	25	2,500



U - TWO WAY BOX

Item Code	Size (mm)	Standard Packs	Bulk Packs (Pcs)
2/BRB/12	20	25	2,500
3/BRB/12	25	25	2,500



TEE - THREE WAY BOX

Item Code	Size (mm)	Standard Packs	Bulk Packs (Pcs)
2/BRB/5	20	20	2,000
3/BRB/5	25	20	2,000



Y - THREE WAY BOX

Item Code	Size (mm)	Standard Packs	Bulk Packs (Pcs)
2/BRB/13	20	25	2,500
3/BRB/13	25	25	2,500



INTERSECTION - FOUR WAY BOX

Item Code	Size (mm)	Standard Packs	Bulk Packs (Pcs)
2/BRB/6	20	20	2,000
3/BRB/6	25	20	2,000



H - FOUR WAY BOX

Item Code	Size (mm)	Standard Packs	Bulk Packs (Pcs)
2/BRB/14	20	25	2,500
3/BRB/14	25	25	2,500



TERMINAL ONE WAY & BACK OUTLET

Item Code	Size (mm)	Standard Packs	Bulk Packs (Pcs)
2/BRB/7	20	20	3,000
3/BRB/7	25	20	3,000



All above products available in 2 colors: Black and White. When ordering use color suffix BK WT

THROUGH TWO WAY & BACK OUTLET

Item Code	Size (mm)	Standard Packs	Bulk Packs (Pcs)
2/BRB/8	20	20	3,000
3/BRB/8	25	20	3,000



ANGLE TWO WAY & BACK OUTLET

Item Code	Size (mm)	Standard Packs	Bulk Packs (Pcs)
2/BRB/9	20	20	3,000
3/BRB/9	25	20	3,000



TEE THREE WAY & BACK OUTLET

Item Code	Size (mm)	Standard Packs	Bulk Packs (Pcs)
2/BRB/10	20	20	3,000
3/BRB/10	25	10	1,500



INTERSECTION FOUR WAY & BACK OUTLET

Item Code	Size (mm)	Standard Packs	Bulk Packs (Pcs)
2/BRB/11	20	10	1,500
3/BRB/11	25	10	1,500



U - TWO WAY & BACK OUTLET

Item Code	Size (mm)	Standard Packs	Bulk Packs (Pcs)
2/BRB/15	20	20	3,000
3/BRB/15	25	20	3,000



Y - THREE WAY & BACK OUTLET

Item Code	Size (mm)	Standard Packs	Bulk Packs (Pcs)
2/BRB/16	20	20	3,000
3/BRB/16	25	10	1,500



All above products available in 2 colors: Black and White. When ordering use color suffix BK WT

H - FOUR WAY & BACK OUTLET

Item Code	Size (mm)	Standard Packs	Bulk Packs (Pcs)
2/BRB/17	20	10	1,500
3/BRB/17	25	10	1,500



INSPECTION ELBOWS

Item Code	Size (mm)	Standard Packs	Bulk Packs (Pcs)
BIE 2	20	25	650
BIE 3	25	25	400



INSPECTION TEES

Item Code	Size (mm)	Standard Packs	Bulk Packs (Pcs)
BIT 2	20	20	520
BIT 3	25	20	320



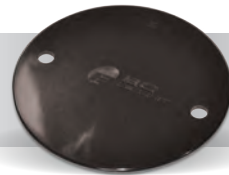
INSPECTION BENDS

Item Code	Size (mm)	Standard Packs	Bulk Packs (Pcs)
BIB 2	20	25	400
BIB 3	25	20	320



CIRCULAR LIDS (Included with two screws to fix.)

Item Code	Size (mm)	Standard Packs	Bulk Packs (Pcs)
BSL 2	66	200	40,000



RUBBER GASKET

Item Code	Size (mm)	Standard Packs	Bulk Packs (Pcs)
BRG	66	100	2600



Available in 2 colors: Black and White. When ordering, use color suffix BK WT

CIRCULAR EXTENSION RING (INCLUDED)

Item Code	Size (mm)	Standard Packs	Bulk Packs (Pcs)
BER 2	20	72	7200
BER 3	25	60	6000
BER 4	32	36	3600
BER 5	38	36	3600
BER 6	50	10	1000



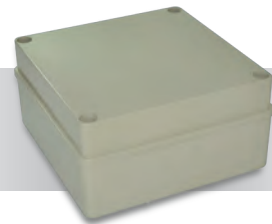
PLIABLE CONDUIT ADAPTERS

Item Code	Size (mm)	Standard Packs	Bulk Packs (Pcs)
BFC 2	20	50	2000
BFC 3	25	100	1200



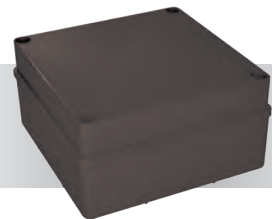
ADAPTABLE BOX

Item Code	Size (mm)	Standard Packs	Bulk Packs(Pcs)
BAB 1	85x83x62	250	3,000
BAB 2	102x100x62	104	1,248



ADAPTABLE BOX

Item Code	Size (mm)	Standard Packs	Bulk Packs(Pcs)
BAB 2BK	100x100x75	104	1,248



BAB1BK also available in White.

WIRE PULLER

Item Code	Diameter (mm)	Size (meter)
BWP 1	4.5	15
BWP 2	4.5	30



BENDING SPRINGS

Heavy Gauge Item Code	Conduit Size (mm)	Light Gauge Item Code	Bulk Packs
BSS H2	20	BSS L2	40
BSS H3	25	BSS L3	25
BSS H4	32	BSS L4	15



Heavy Gauge springs are suitable for heavy & medium gauge conduits while light gauge springs are suitable for light gauge conduits.

PVC CEMENT

CLEAR PVC SOLVENT CEMENT FOR PVC PIPES AND FITTINGS

Item Code	Size (ml)	Standard Packs	Bulk Packs (Pcs)
BSG 1 (E)*	118	48	3,000
BSG 2 (E)*	237	24	1680
BSG 3 (E)*	473	12	600
BSG 4 (E)*	946	6	150

Available in 118ml, 237ml, 473ml and 946ml cans with applicator.
Suitable for use with PVC & UPVC BC Conduit, trunking & fittings.
Available as Made in Canada.



MADE IN CANADA

CEMENTING PROCEDURE

1. Remove all sharp edges or burrs from the inside and outside of the conduit and fittings.
2. Be sure that the surfaces of conduit and conduit fittings are free from dirt, moisture, oil and other foreign particles.
3. For applying Solvent Cement, use gloves and never let the cement to get on to your hands.
4. Apply a coat of BSG Solvent Cement to the end of conduit and the length of the socket to be attached.
 - a. If cement looks dry before joining, apply the dry parts with another coating, make sure the cement does not get dry before getting the parts together.
5. Slide the parts together and give a quarter turn to ensure the solvent is spread evenly on the material.
6. Hold together both parts for a few seconds until the joint is completely firm.



BRITISH STANDARD

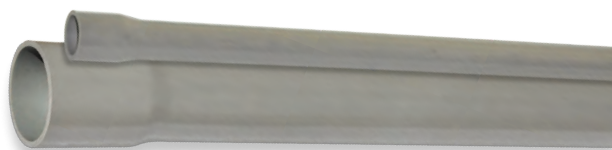
BS 3506 - 1969

Class B, C, & O

BC CONDUIT 32
BC COND

POLYVINYL CHLORIDE MADE IN K.S.A. XP2-R 21011504361151

EB20 *NEMA TC 6



CLASS B, 6.0 BAR

Item Code	Trade Size (Inch)	Mean Outside diameter		Wall Thickness			Standard Pack (pcs)	Bulk Pack (Pcs)
		Min	Max	Avg Max (mm)	Individual Value			
					Min (mm)	Max (mm)		
BIP/130-B	3	88.70	89.10	3.4	2.9	3.4	1	240
BIP/140-B	4	114.1	114.5	4.0	3.4	4.0	1	144
BIP/150-B	5	140.0	140.4	4.4	3.8	4.4	1	91
BIP/160-B	6	168.0	168.5	5.2	4.5	5.2	1	72
BIP/200-B	8	218.8	219.4	6.1	5.3	6.1	1	75
BIP/250-B	10	272.6	273.4	7.5	6.6	7.6	1	24

FABRICATED COUPLING

Item code	Trade Size (Inch)	Standard Pack	Bulk Pack
BFC/130-B	3	45	810
BFC/140-B	4	24	432
BFC/150-B	5	1	108
BFC/160-B	6	1	70
BFC/200-B	8	1	28
BFC/250-B	10	1	25



90° ELBOW

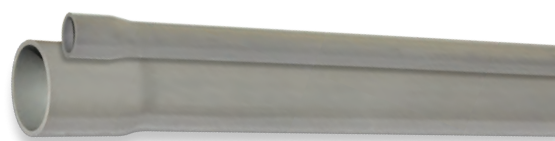
Item code	Trade Size (Inch)	Standard Packs	Bulk Packs
BBE/130-9B/2S	3	1	100
BBE/140-9B/2S	4	1	50
BBE/150-9B/2S	5	1	40
BBE/160-9B/2S	6	1	24
BBE/200-9B/2S	8	1	16
BBE/250-9B/2S	10	1	16



FABRICATED END BELL

Item code	Trade Size (Inch)	Standard Pack	Bulk Pack
BEB/130-B	3	30	540
BEB/140-B	4	24	432
BEB/150-B	5	1	70
BEB/160-B	6	1	108
BEB/200-B	8	1	30
BEB/250-B	10	1	30





CLASS C, 9.0 BAR

Item Code	Trade Size (Inch)	Mean Outside diameter		Wall Thickness			Standard Pack (pcs)	Bulk Pack (Pcs)
		Min	Max	Avg	Individual Value			
				Max (mm)	Min (mm)	Max (mm)		
BIP/130-C	3	88.70	89.10	4.100	3.5	4.10	1	260
BIP/140-C	4	114.1	114.5	5.200	4.5	5.20	1	144
BIP/150-C	5	140.0	140.4	6.300	5.5	6.40	1	91
BIP/160-C	6	168.0	168.5	7.500	6.6	7.60	1	66
BIP/200-C	8	218.8	219.4	8.800	7.8	9.00	1	45
BIP/250-C	10	272.6	273.4	10.90	9.7	11.2	1	28

FABRICATED COUPLING

Item code	Trade Size (Inch)	Standard Pack	Bulk Pack
BFC/130-C	3	45	810
BFC/140-C	4	24	432
BFC/150-C	5	1	108
BFC/160-C	6	1	70
BFC/200-C	8	1	30
BFC/250-C	10	1	25



CLASS C, 90° ELBOW

Item code	Trade Size (Inch)	Standard Packs	Bulk Packs (pcs)
BBE/130-9C/2S	3	1	60
BBE/140-9C/2S	4	1	50
BBE/150-9C/2S	5	1	40
BBE/160-9C/2S	6	1	24
BBE/200-9C/2S	8	1	16
BBE/250-9C/2S	10	1	12



FABRICATED END BELLS

Item code	Trade Size (Inch)	Standard Pack	Bulk Pack
BEB/130-C	3	30	540
BEB/140-C	4	24	432
BEB/150-C	5	1	108
BEB/160-C	6	1	70
BEB/200-C	8	1	30
BEB/250-C	10	1	25





CLASS O (NON-PRESSURE)

Item Code	Trade Size (Inch)	Mean Outside diameter		Wall Thickness			Standard Pack (pcs)	Bulk Pack (Pcs)
		Min	Max	Avg	Individual Value			
				Max (mm)	Min (mm)	Max (mm)		
BIP/130-O	3	88.70	89.10	2.2	1.8	2.2	1	260
BIP/140-O	4	114.1	114.5	2.8	2.3	2.8	1	144
BIP/150-O	5	140.0	140.4	3.1	2.6	3.1	1	91
BIP/160-O	6	168.0	168.5	3.7	3.1	3.7	1	72
BIP/200-O	8	218.8	219.4	3.7	3.1	3.7	1	45
BIP/250-O	10	272.6	273.4	3.7	3.1	3.7	1	24

FABRICATED COUPLING

Item code	Trade Size (Inch)	Standard Pack	Bulk Pack
BFC/130-O	3	45	810
BFC/140-O	4	24	432
BFC/150-O	5	1	162
BFC/160-O	6	1	108
BFC/200-O	8	1	28
BFC/250-O	10	1	25



90° ELBOW

Item code	Trade Size (Inch)	Standard Packs (pcs)	Bulk Packs (pcs)
BBE/130-90/2S	3	1	100
BBE/140-90/2S	4	1	50
BBE/150-90/2S	5	1	40
BBE/160-90/2S	6	1	24
BBE/200-90/2S	8	1	16
BBE/250-90/2S	10	1	16



FABRICATED END BELL

Item code	Trade Size (Inch)	Standard Pack	Bulk Pack
BEB/130-O	3	30	540
BEB/140-O	4	24	432
BEB/150-O	5	1	108
BEB/160-O	6	1	70
BEB/200-O	8	1	28
BEB/250-O	10	1	25



DIN STANDARD

SASO 14-15 1998 EQUIVALENT TO DIN
8061 / 8062 CLASS 2,3,4 & 5

BC CONDUIT 38
BC COND

POLYVINYL CHLORIDE MADE IN K.S.A. XP2-R 21011504361151

EB20 *NEMA TC 6

DIN STANDARD

CLASS - 2 (4.0 BAR)

SASO 14/15 1998 EQU TO DIN 8061/8062



Item code	Normal Outside Diameter (mm)	Wall Thickness min.(mm)	Normal Weight (kg/m)	Standard Pack (Pack)	Bulk Pack(Pcs)
BCDP/075	075	1.8	0.642	1	325
BCDP/090	090	1.8	0.774	1	231
BCDP/110	110	2.2	1.160	1	162
BCDP/125	125	2.5	1.480	1	120
BCDP/140	140	2.8	1.840	1	98
BCDP/160	160	3.2	2.410	1	72
BCDP/180	180	3.6	3.020	1	50
BCDP/200	200	4.0	3.700	1	45
BCDP/225	225	4.5	4.700	1	35
BCDP/250	250	4.9	5.650	1	30
BCDP/280	280	5.5	7.110	1	28

FABRICATED COUPLING

Item code	Trade Size («mm»)	Standard Pack	Bulk Pack
BFC/075-C2	075	60	1080
BFC/090-C2	090	32	576
BFC/110-C2	110	24	432
BFC/125-C2	125	1	150
BFC/140-C2	140	1	100
BFC/160-C2	160	1	60
BFC/180-C2	180	1	65
BFC/200-C2	200	1	28
BFC/225-C2	225	1	36
BFC/250-C2	250	1	25
BFC/280-C2	280	1	20



90° DEG ELBOW



Item code	Nominal Outside Diameter (mm)	Standard Packs (pcs)	Bulk Packs (pcs)
BSE/075-9C2/2S	075	1	120
BSE/090-9C2/2S	090	1	66
BSE/110-9C2/2S	110	1	50
BSE/125-9C2/2S	125	1	48
BSE/140-9C2/2S	140	1	42
BSE/160-9C2/2S	160	1	24
BSE/180-9C2/2S	180	1	20
BSE/200-9C2/2S	200	1	20
BSE/225-9C2/2S	225	1	20
BSE/250-9C2/2S	250	1	16
BSE/280-9C2/2S	280	1	16

* Our standard Bend has both side sockets

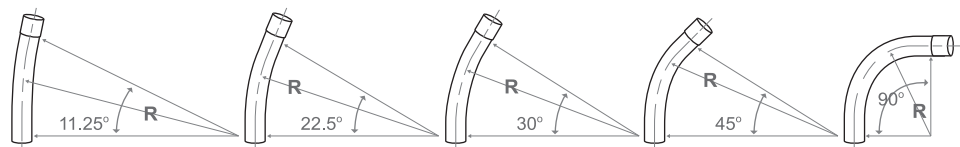
45° DEG ELBOW



Item code	Nominal Outside Diameter (mm)	Standard Packs (pcs)	Bulk Packs (pcs)
BSE/075-7C2/2S	075	1	120
BSE/090-7C2/2S	090	1	66
BSE/110-7C2/2S	110	1	50
BSE/125-7C2/2S	125	1	100
BSE/140-7C2/2S	140	1	42
BSE/160-7C2/2S	160	1	24
BSE/180-7C2/2S	180	1	20
BSE/200-7C2/2S	200	1	20
BSE/225-7C2/2S	225	1	20
BSE/250-7C2/2S	250	1	16
BSE/280-7C2/2S	280	1	16

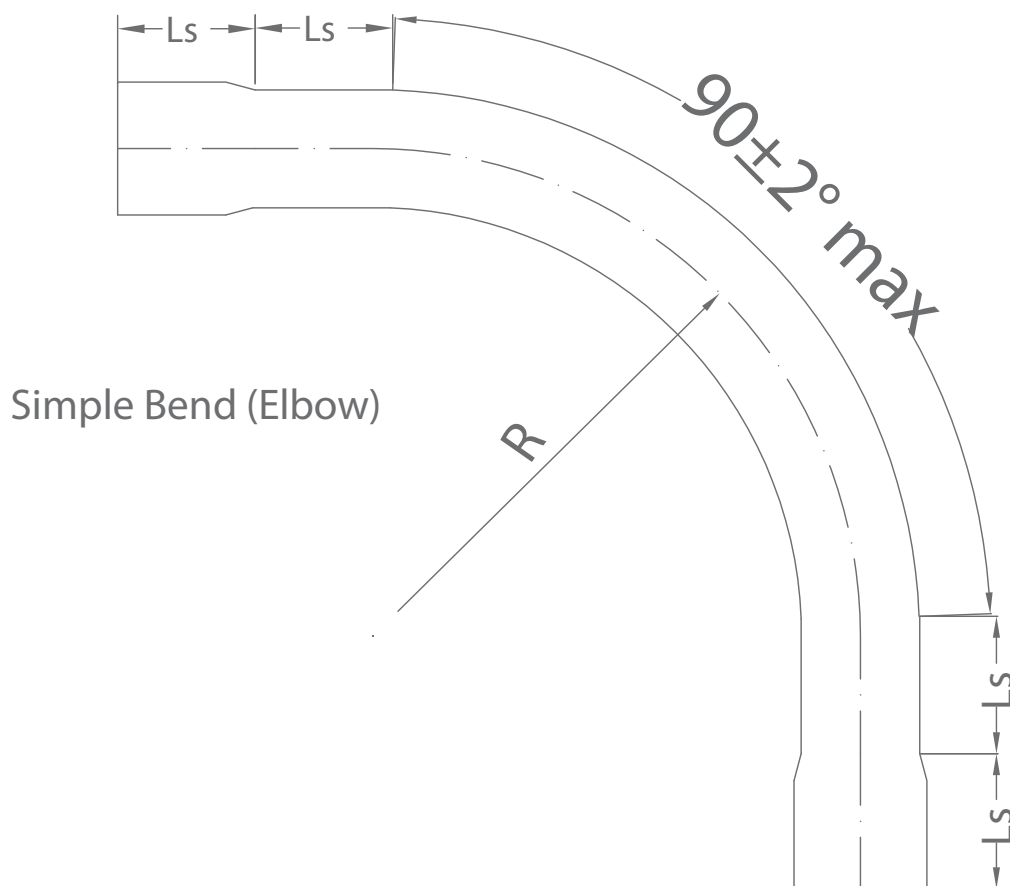
* We are able to make any type of radius

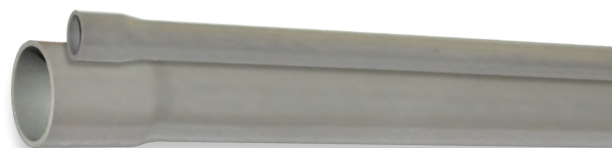
- 9 = 90° Elbow
- 7 = 45° Elbow
- 6 = 30° Elbow
- 5 = 22½° Elbow
- 3 = 11¼° Elbow



FABRICATED END BELL

Item code	Trade Size («mm»)	Standard Pack	Bulk Pack
BEB/075-C2	075	50	900
BEB/090-C2	090	32	576
BEB/110-C2	110	24	432
BEB/125-C2	125	20	324
BEB/140-C2	140	20	324
BEB/160-C2	160	1	65
BEB/180-C2	180	1	50
BEB/200-C2	200	1	55
BEB/225-C2	225	1	30
BEB/250-C2	250	1	20
BEB/280-C2	280	1	20





Item code	Normal Outside Diameter (mm)	Wall Thickness min.(mm)	Normal Weight (kg/m)	Standard Pack (Pack)	Bulk Pack(Pcs)
BCTP/040	040	1.8	0.334	20	1,300
BCTP/050	050	1.8	0.422	5	720
BCTP/063	063	1.9	0.562	1	450
BCTP/075	075	2.2	0.782	1	325
BCTP/090	090	2.7	1.130	1	250
BCTP/110	110	3.2	1.640	1	162
BCTP/125	125	3.7	2.130	1	120
BCTP/140	140	4.1	2.650	1	98
BCTP/160	160	4.7	3.440	1	72
BCTP/180	180	5.3	4.370	1	62
BCTP/200	200	5.9	5.370	1	45
BCTP/225	225	6.6	6.760	1	35
BCTP/250	250	7.3	8.310	1	28
BCTP/280	280	8.2	10.40	1	20

FABRICATED COUPLING

Item code	Trade Size («mm»)	Standard Pack	Bulk Pack
BFC/063-C3	063	75	1,350
BFC/075-C3	075	60	1080
BFC/090-C3	090	32	576
BFC/110-C3	110	24	432
BFC/125-C3	125	1	324
BFC/140-C3	140	1	100
BFC/160-C3	160	1	75
BFC/180-C3	180	1	60
BFC/200-C3	200	1	55
BFC/225-C3	225	1	30
BFC/250-C3	250	1	25
BFC/280-C3	280	1	12



*All sizes are available as per standard

DIN STANDARD

CLASS-3 (6.0 BAR)

SASO 14/15 1998 EQU TO DIN 8061/8062

90° DEG ELBOW

Item code	Normal Outside Diameter (mm)	Standard Pack (Pack)	Bulk Pack(Pcs)
BSE/040-9C3/2S	040	60	1080
BSE/050-9C3/2S	050	40	720
BSE/063-9C3/2S	063	20	360
BSE/075-9C3/2S	075	1	110
BSE/090-9C3/2S	090	1	100
BSE/110-9C3/2S	110	1	50
BSE/125-9C3/2S	125	1	45
BSE/140-9C3/2S	140	1	40
BSE/160-9C3/2S	160	1	24
BSE/180-9C3/2S	180	1	20
BSE/200-9C3/2S	200	1	16
BSE/225-9C3/2S	225	1	16
BSE/250-9C3/2S	250	1	12
BSE/280-9C3/2S	280	1	12

* Our standard Bend has both side sockets

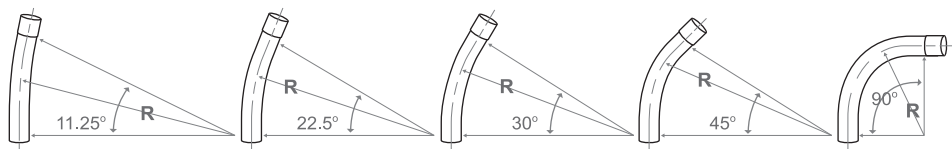


45° DEG ELBOW

Item code	Normal Outside Diameter (mm)	Standard Packs (pcs)	Bulk Packs (pcs)
BSE/040-7C3/2S	040	60	1080
BSE/050-7C3/2S	050	40	720
BSE/063-7C3/2S	063	20	360
BSE/075-7C3/2S	075	1	120
BSE/090-7C3/2S	090	1	100
BSE/110-7C3/2S	110	1	50
BSE/125-7C3/2S	125	1	50
BSE/140-7C3/2S	140	1	40
BSE/160-7C3/2S	160	1	20
BSE/180-7C3/2S	180	1	16
BSE/200-7C3/2S	200	1	16
BSE/225-7C3/2S	225	1	16
BSE/250-7C3/2S	250	1	12
BSE/280-7C3/2S	280	1	12



- 9 = 90° Elbow
- 7 = 45° Elbow
- 6 = 30° Elbow
- 5 = 22½° Elbow
- 3 = 11¼° Elbow



FABRICATED END BELL

Item code	Trade Size	Standard Pack	Bulk Pack
BEB/040-C3	040	180	3,240
BEB/050-C3	050	120	2,160
BEB/063-C3	063	50	900
BEB/075-C3	075	50	900
BEB/090-C3	090	32	576
BEB/110-C3	110	24	432
BEB/125-C3	125	20	324
BEB/140-C3	140	20	324
BEB/160-C3	160	1	65
BEB/180-C3	180	1	60
BEB/200-C3	200	1	55
BEB/225-C3	225	1	30
BEB/250-C3	250	1	20
BEB/280-C3	280	1	20



SASO END CAPS

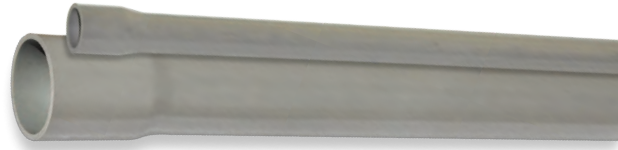
Item code	Trade Size	Bulk Pack
BECP/040-C3	040	30
BECP/050-C3	050	25
BECP/063-C3	063	25
BECP/075-C3	075	10
BECP/090-C3	090	10
BECP/110-C3	110	5
BECP/125-C3	125	5
BECP/140-C3	140	5
BECP/160-C3	160	5
BECP/180-C3	180	2
BECP/200-C3	200	2
BECP/225-C3	225	1
BECP/250-C3	250	1
BECP/280-C3	280	1



CLASS-4 (10.0 BAR)

DIN STANDARD

SASO 14/15 1998 EQU TO DIN 8061/8062



Item code	Nominal Outside Diameter (mm)	Wall Thickness Min.(mm)	Nominal Weight (kg/m)	Standard pack (pcs)	Bulk Pack (pcs)
BCFP/025	025	1.50	0.174	25	3,000
BCFP/032	032	1.80	0.264	20	1,800
BCFP/040	040	1.90	0.350	20	1,300
BCFP/050	050	2.40	0.552	5	720
BCFP/063	063	3.00	0.854	1	450
BCFP/075	075	3.60	1.220	1	325
BCFP/090	090	4.30	1.750	1	250
BCFP/110	110	5.30	2.610	1	162
BCFP/125	125	6.00	3.340	1	120
BCFP/140	140	6.70	4.180	1	98
BCFP/160	160	7.70	5.470	1	72
BCFP/180	180	8.60	6.880	1	62
BCFP/200	200	9.60	8.510	1	45
BCFP/225	225	10.8	10.80	1	35
BCFP/250	250	11.9	13.20	1	28
BCFP/280	280	13.4	16.60	1	20

FABRICATED COUPLING

Item code	Trade Size	Standard Pack	Bulk Pack
BFC/063-C4	063	75	1350
BFC/075-C4	075	60	1080
BFC/090-C4	090	32	576
BFC/110-C4	110	24	432
BFC/125-C4	125	1	100
BFC/140-C4	140	1	75
BFC/160-C4	160	1	60
BFC/180-C4	180	1	55
BFC/200-C4	200	1	30
BFC/225-C4	225	1	30
BFC/250-C4	250	1	25
BFC/280-C4	280	1	12



*All sizes are available as per standard

CLASS-4 (10.0 BAR)

90° DEG ELBOW

Item code	Nominal Outside Diameter (mm)	Standard Packs (pcs)	Bulk Packs (pcs)
BSE/025-9C4/2S	025	30	3000
BSE/032-9C4/2S	032	100	1800
BSE/040-9C4/2S	040	60	1080
BSE/050-9C4/2S	050	25	720
BSE/063-9C4/2S	063	25	360
BSE/075-9C4/2S	075	1	110
BSE/090-9C4/2S	090	1	100
BSE/110-9C4/2S	110	1	50
BSE/125-9C4/2S	125	1	50
BSE/140-9C4/2S	140	1	42
BSE/160-9C4/2S	160	1	24
BSE/180-9C4/2S	180	1	20
BSE/200-9C4/2S	200	1	20
BSE/225-9C4/2S	225	1	16
BSE/250-9C4/2S	250	1	16
BSE/280-9C4/2S	280	1	16

* Our standard Bend has both side sockets



45° DEG ELBOW

Item code	Nominal Outside Diameter (mm)	Standard Packs (pcs)	Bulk Packs (pcs)
BSE/025-7C4/2S	025	30	3000
BSE/032-7C4/2S	032	100	1800
BSE/040-7C4/2S	040	60	1080
BSE/050-7C4/2S	050	40	720
BSE/063-7C4/2S	063	20	360
BSE/075-7C4/2S	075	1	110
BSE/090-7C4/2S	090	1	100
BSE/110-7C4/2S	110	1	50
BSE/125-7C4/2S	125	1	50
BSE/140-7C4/2S	140	1	42
BSE/160-7C4/2S	160	1	24
BSE/180-7C4/2S	180	1	20
BSE/200-7C4/2S	200	1	20
BSE/225-7C4/2S	225	1	16
BSE/250-7C4/2S	250	1	16
BSE/280-7C4/2S	280	1	16



FABRICATED END BELL

Item code	Trade Size(mm)	Standard Pack	Bulk Pack
BEB/040-C4	040	180	3,240
BEB/050-C4	050	120	2,160
BEB/063-C4	063	60	1080
BEB/075-C4	075	50	900
BEB/090-C4	090	32	576
BEB/110-C4	110	24	432
BEB/125-C4	125	20	324
BEB/140-C4	140	20	324
BEB/160-C4	160	1	65
BEB/180-C4	180	4	60
BEB/200-C4	200	1	55
BEB/225-C4	225	1	30
BEB/250-C4	250	1	20
BEB/280-C4	280	1	20



SASO END CAPS

Item code	Trade Size (mm)	Bulk Pack
BECP/025-C4	025	75
BECP/032-C4	032	40
BECP/040-C4	040	30
BECP/050-C4	050	25
BECP/063-C4	063	25
BECP/075-C4	075	10
BECP/090-C4	090	10
BECP/110-C4	110	5
BECP/125-C4	125	5
BECP/140-C4	140	5
BECP/160-C4	160	5
BECP/180-C4	180	2
BECP/200-C4	200	2
BECP/225-C4	225	1
BECP/250-C4	250	1
BECP/280-C4	280	1



DIN STANDARD

CLASS-5 (16.0 BAR)

SASO 14/15 1998 EQU TO DIN 8061/8062



Item code	Nominal Outside Dia. (mm)	Wall Thickness Min. (mm)	Nominal Weight (kg/m)	Standard pack (pcs)	Bulk Pack (pcs)
BCVP/020	020	1.50	0.137	50	4,550
BCVP/025	025	1.90	0.212	25	3,000
BCVP/032	032	2.40	0.342	20	1,800
BCVP/040	040	3.00	0.525	20	1,300
BCVP/050	050	3.70	0.809	5	800
BCVP/063	063	4.70	1.282	1	450
BCVP/075	075	5.60	1.819	1	325
BCVP/090	090	6.70	2.612	1	242
BCVP/110	110	8.20	3.907	1	162
BCVP/125	125	9.30	5.010	1	128
BCVP/140	140	10.4	6.270	1	98
BCVP/160	160	11.9	8.170	1	72
BCVP/180	180	13.4	10.40	1	62
BCVP/200	200	14.9	12.80	1	56
BCVP/225	225	16.7	16.10	1	50
BCVP/250	250	18.6	19.90	1	44
BCVP/280	280	20.8	24.90	1	38

FABRICATED COUPLING

Item code	Trade Size (mm)	Standard Pack	Bulk Pack
BFC/063-C5	063	75	1350
BFC/075-C5	075	60	1080
BFC/090-C5	090	32	576
BFC/110-C5	110	24	432
BFC/125-C5	125	18	100
BFC/140-C5	140	1	75
BFC/160-C5	160	1	60
BFC/180-C5	180	1	55
BFC/200-C5	200	1	30
BFC/225-C5	225	1	30
BFC/250-C5	250	1	25
BFC/280-C5	280	1	12

*All sizes are available as per standard



90° DEG ELBOW

Item code	Nominal Outside Dia.(mm)	Standard Packs (pcs)	Bulk Packs (pcs)
BSE/020-9C5/2S	020	30	3,000
BSE/025-9C5/2S	025	150	2700
BSE/032-9C5/2S	032	100	1800
BSE/040-9C5/2S	040	60	1080
BSE/050-9C5/2S	050	40	720
BSE/063-9C5/2S	063	20	360
BSE/075-9C5/2S	075	1	110
BSE/090-9C5/2S	090	1	100
BSE/110-9C5/2S	110	1	50
BSE/125-9C5/2S	125	1	50
BSE/140-9C5/2S	140	1	42
BSE/160-9C5/2S	160	1	24
BSE/180-9C5/2S	180	1	20
BSE/200-9C5/2S	200	1	20
BSE/225-9C5/2S	225	1	16
BSE/250-9C5/2S	250	1	16
BSE/280-9C5/2S	280	1	16

* Our standard Bend has both side sockets



45° DEG ELBOW

Item code	Nominal Outside Diameter (mm)	Standard Packs (pcs)	Bulk Packs (pcs)
BSE/020-7C5/2S	020	30	3,000
BSE/025-7C5/2S	025	150	2700
BSE/032-7C5/2S	032	100	1800
BSE/040-7C5/2S	040	60	1080
BSE/050-7C5/2S	050	40	720
BSE/063-7C5/2S	063	20	360
BSE/075-7C5/2S	075	1	110
BSE/090-7C5/2S	090	1	100
BSE/110-7C5/2S	110	1	50
BSE/125-7C5/2S	125	1	50
BSE/140-7C5/2S	140	1	42
BSE/160-7C5/2S	160	1	24
BSE/180-7C5/2S	180	1	20
BSE/200-7C5/2S	200	1	20
BSE/225-7C5/2S	225	1	16
BSE/250-7C5/2S	250	1	16
BSE/280-7C5/2S	280	1	16



FABRICATED END BELL

Item code	Trade Size	Standard Pack	Bulk Pack
BEB/040-C5	040	180	3,240
BEB/050-C5	050	120	2,160
BEB/063-C5	063	50	720
BEB/075-C5	075	50	900
BEB/090-C5	090	32	576
BEB/110-C5	110	24	432
BEB/125-C5	125	20	324
BEB/140-C5	140	20	324
BEB/160-C5	160	1	65
BEB/180-C5	180	1	60
BEB/200-C5	200	1	55
BEB/225-C5	225	1	30
BEB/250-C5	250	1	20
BEB/280-C5	280	1	20



SASO END CAPS

Item code	Trade Size	Bulk Pack
BECP/025-C5	025	75
BECP/032-C5	032	40
BECP/040-C5	040	30
BECP/050-C5	050	25
BECP/063-C5	063	25
BECP/075-C5	075	10
BECP/090-C5	090	10
BECP/110-C5	110	5
BECP/125-C5	125	5
BECP/140-C5	140	5
BECP/160-C5	160	5
BECP/180-C5	180	2
BECP/200-C5	200	2
BECP/225-C5	225	1
BECP/250-C5	250	1
BECP/280-C5	280	1



AMERICAN STANDARD

NEMA TC-2 CONDUIT

NEMA TC-3 FITTINGS

BC CONDUIT 32
BC COND

POLYVINYL CHLORIDE MADE IN K.S.A. XP2-R 21011504361151

EB20 *NEMA TC 6

RIGID PVC CONDUITS
 Electrical Polyvinyl Chloride (EPC40)
 UPVC - SCH40

AMERICAN STANDARD



UL 651 "UL LISTED" SCH40

Item Code	Trade Size (inch)	Metric Designators	Average outside diameter mm	Wall Thickness (Min.) mm	Nominal Weight Kg/m	Standard Packs	Bulk Packs (Pcs)
BAC/105-UL	1/2	16	21.340	2.77	0.248	40	3,640
BAC/107-UL	3/4	21	26.670	2.87	0.329	30	2,400
BAC/110-UL	1	27	33.400	3.38	0.483	20	1,560
BAC/112-UL	1 1/4	35	42.160	3.56	0.652	20	900
BAC/115-UL	1 1/2	41	48.260	3.68	0.779	10	720
BAC/120-UL	2	53	60.320	3.91	1.040	5	450
BAC/125-UL	2 1/2	63	73.020	5.16	1.610	1	400
BAC/130-UL	3	78	88.900	5.49	2.160	1	260
BAC/140-UL	4	103	114.30	6.02	3.070	1	150
BAC/150-UL	5	129	141.30	6.55	4.180	1	144
BAC/160-UL	6	155	168.28	7.11	5.410	1	72

NEMA TC2 (EPC40) CONDUIT SCH40

Item Code	Trade Size (inch)	Metric Designators	Average outside diameter mm	SCH-40		Standard Packs	Bulk Packs (Pcs)
				Wall Thickness (Min.) mm	Nominal Weight Kg/m		
BAC/105	1/2	16	21.340	2.77	0.248	40	3,640
BAC/107	3/4	21	26.670	2.87	0.329	30	2,400
BAC/110	1	27	33.400	3.38	0.483	20	1,560
BAC/112	1 1/4	35	42.160	3.56	0.652	20	900
BAC/115	1 1/2	41	48.260	3.68	0.779	10	720
BAC/120	2	53	60.320	3.91	1.040	10	450
BAC/125	2 1/2	63	73.020	5.16	1.610	1	400
BAC/130	3	78	88.900	5.49	2.160	1	260
BAC/140	4	103	114.30	6.02	3.070	1	144
BAC/150	5	129	141.30	6.55	4.180	1	72
BAC/160	6	155	168.28	7.11	5.410	1	72
BAC/200	8	200	219.00	8.18	8.250	1	36

90° ELBOW - PLAIN END

Item Code	Trade Size (inch)	Metric Designators	Standard Packs (Pcs)	Bulk Packs (Pcs)
BAE/105-903	1/2	16	30	3000
BAE/107-903	3/4	21	150	2700
BAE/110-903	1	27	100	1800
BAE/112-903	1 1/4	35	60	1080
BAE/115-903	1 1/2	41	40	720
BAE/120-903	2	53	20	360
BAE/125-903	2 1/2	63	1	100
BAE/130-903	3	78	1	66
BAE/140-903	4	103	1	50
BAE/150-903	5	129	1	20
BAE/160-903	6	155	1	24
BAE/200-903	8	200	1	20

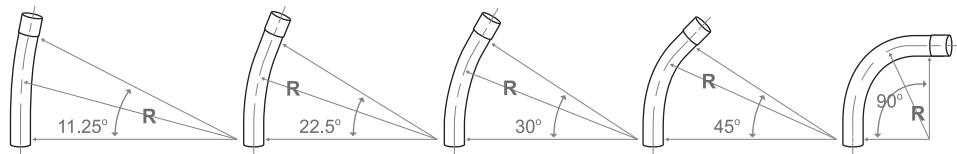


90° ELBOW - BELL ONE END

Item Code	Trade Size (inch)	Metric Designators	Standard Packs (Pcs)	Bulk Packs (Pcs)
BAE/105-903/S	1/2	16	30	3000
BAE/107-903/S	3/4	21	150	2700
BAE/110-903/S	1	27	100	1800
BAE/112-903/S	1 1/4	35	60	1080
BAE/115-903/S	1 1/2	41	40	720
BAE/120-903/S	2	53	20	360
BAE/125-903/S	2 1/2	63	1	100
BAE/130-903/S	3	78	1	66
BAE/140-903/S	4	103	1	50
BAE/150-903/S	5	129	1	20
BAE/160-903/S	6	155	1	24
BAE/200-903/S	8	200	1	20



- 9 = 90° Elbow
- 7 = 45° Elbow
- 6 = 30° Elbow
- 5 = 22½° Elbow
- 3 = 11¼° Elbow



UPVC FITTINGS, NEMA TC3 AMERICAN STANDARD

STANDARD COUPLING

Item Code	Size (inch)	Standard Packs	Bulk Packs (Pcs)
BSC/105	1/2	100	20,000
BSC/107	3/4	100	10,000
BSC/110	1	50	5,000
BSC/112	1 1/4	25	2,500
BSC/115	1 1/2	25	2,500
BSC/120	2	20	2,000



FABRICATED COUPLING

Item Code	Size (inch)	Standard Packs	Bulk Packs (Pcs)
BFC/125-03	2 1/2	56	1008
BFC/130-03	3	45	810
BFC/140-03	4	24	432
BFC/150-03	5	1	70
BFC/160-03	6	1	70
BFC/200-03	8	1	30



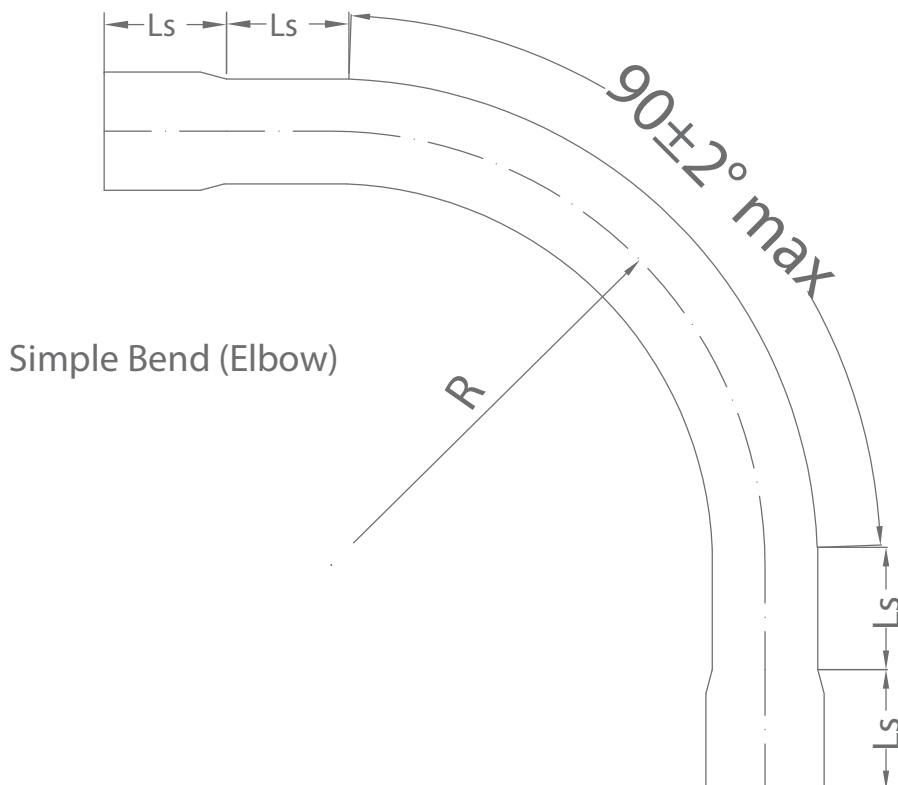
UPVC ELBOWS, NEMA TC3 AMERICAN STANDARD



90° ELBOW - BELL TWO ENDS

Item Code	Trade Size (inch)	Metric Designators	Standard Packs (Pcs)	Bulk Packs (Pcs)
BAE/105-903/2S	1/2	16	30	3000
BAE/107-903/2S	3/4	21	150	2700
BAE/110-903/2S	1	27	100	1800
BAE/112-903/2S	1 1/4	35	50	1080
BAE/115-903/2S	1 1/2	41	60	720
BAE/120-903/2S	2	53	40	360
BAE/125-903/2S	2 1/2	63	20	50
BAE/130-903/2S	3	78	1	45
BAE/140-903/2S	4	103	1	40
BAE/150-903/2S	5	129	1	20
BAE/160-903/2S	6	155	1	24
BAE/200-903/2S	8	200	1	20

* Our standard Bend has both side sockets



FABRICATED END BELL

Item Code	Trade Size (mm)	Standard Packs	Bulk Packs (Pcs)
BEB/120-03	2	60	1080
BEB/125-03	2½	56	1008
BEB/130-03	3	45	810
BEB/140-03	4	24	432
BEB/150-03	5	1	90
BEB/160-03	6	1	90
BEB/200-03	8	1	30



MALE ADAPTER

Item Code	Trade Size	Standard Packs	Bulk Packs (Pcs)
BMA/105	1/2	100	20,000
BMA/107	3/4	100	10,000
BMA/110	1	50	5,000
BMA/112	1¼	25	2,500
BMA/115	1½	25	2,500
BMA/120	2	20	2,000
BMA/125	2½	20	1,200



INSULATING BUSHINGS PLASTIC (OUT SOURCE MATERIAL)

Item Code	Trade Size (inch)
BC.CRH931	1/2
BC.CRH932	3/4
BC.CRH933	1
BC.CRH934	1 1/4
BC.CRH935	1½
BC.CRH936	2
BC.CRH937	2½



BAHRA LOCK NUT

Item Code	Trade Size (inch)
BLN/105	1/2
BLN/107	3/4
BLN/110	1
BLN/115	1½
BLN/120	2
BLN/125	2½
BLN/130	3
BLN/140	4
BLN/160	6

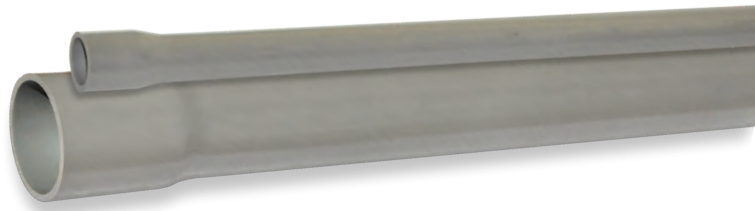


RIGID PVC CONDUITS

Electrical Polyvinyl Chloride (EPC80)

UPVC - SCH 80

AMERICAN STANDARD



NEMA TC2 (EPC80) CONDUIT SCH 80

Item Code	Trade Size (inch)	Metric Designators	Average outside diameter mm	Wall Thickness (Min.) mm	Nominal Weight Kg/m	Standard Packs	Bulk Packs (Pcs)
BAC/8105	1/2	16	21.340	3.730	0.3110	40	3,640
BAC/8107	3/4	21	26.670	3.910	0.4210	20	2,400
BAC/8110	1	27	33.400	4.550	0.6200	20	1560
BAC/8112	1 1/4	35	42.160	4.850	0.8540	20	900
BAC/8115	1 1/2	41	48.260	5.080	1.0340	10	720
BAC/8120	2	53	60.320	5.540	1.4290	5	480
BAC/8125	2 1/2	63	73.020	7.010	2.1790	1	400
BAC/8130	3	78	88.900	7.620	2.1930	1	260
BAC/8140	4	103	114.30	8.560	4.2880	1	162
BAC/8150	5	129	141.30	9.520	5.9290	1	98
BAC/8160	6	155	168.28	10.97	8.1430	1	70
BAC/8200	8	200	219.00	12.70	12.345	1	36



UPVC FITTINGS, NEMA TC3 AMERICAN STANDARD

STANDARD COUPLING

Item Code	Size (inch)	Standard Packs	Bulk Packs (Pcs)
BSC/8105	1/2	100	20,000
BSC/8107	3/4	100	10,000
BSC/8110	1	50	5,000
BSC/8112	1 1/4	25	2,500
BSC/8115	1 1/2	25	2,500
BSC/8120	2	20	2,000



FABRICATED COUPLING

Item Code	Size (inch)	Standard Packs	Bulk Packs (Pcs)
BFC/8125-03	2 1/2	56	1008
BFC/8130-03	3	45	810
BFC/8140-03	4	24	432
BFC/8150-03	5	1	70
BFC/8160-03	6	1	70
BFC/8200-03	8	1	30



90° ELBOW - PLAIN END

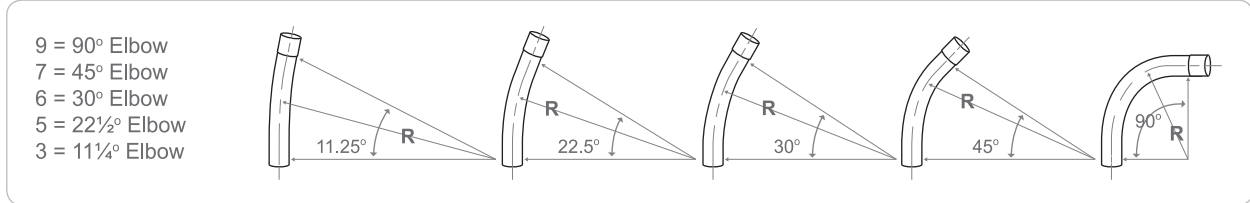


Item Code	Trade Size (inch)	Metric Designators	Standard Packs (Pcs)	Bulk Packs (Pcs)
BAE/8105-903	1/2	16	30	3000
BAE/8107-903	3/4	21	150	2700
BAE/8110-903	1	27	100	1800
BAE/8112-903	1 1/4	35	60	1080
BAE/8115-903	1 1/2	41	40	720
BAE/8120-903	2	53	20	360
BAE/8125-903	2 1/2	63	1	100
BAE/8130-903	3	78	1	66
BAE/8140-903	4	103	1	50
BAE/8150-903	5	129	1	20
BAE/8160-903	6	155	1	24
BAE/8200-903	8	200	1	20

90° ELBOW - BELL ONE END



Item Code	Trade Size (inch)	Metric Designators	Standard Packs (Pcs)	Bulk Packs (Pcs)
BAE/8105-903/S	1/2	16	30	3000
BAE/8107-903/S	3/4	21	150	2700
BAE/8110-903/S	1	27	100	1800
BAE/8112-903/S	1 1/4	35	60	1080
BAE/8115-903/S	1 1/2	41	40	720
BAE/8120-903/S	2	53	20	360
BAE/8125-903/S	2 1/2	63	1	100
BAE/8130-903/S	3	78	1	66
BAE/8140-903/S	4	103	1	50
BAE/8150-903/S	5	129	1	20
BAE/8160-903/S	6	155	1	24
BAE/8200-903/S	8	200	1	20

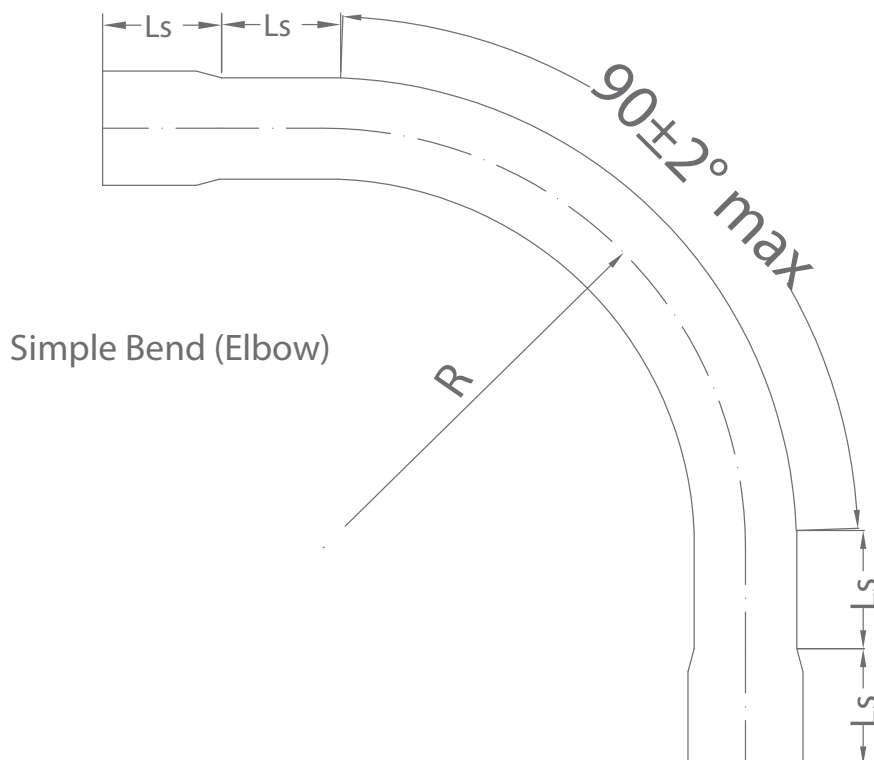




90° ELBOW - BELL TWO ENDS

Item Code	Trade Size (inch)	Metric Designators	Standard Packs (Pcs)	Bulk Packs (Pcs)
BAE/8105-903/2S	1/2	16	30	3000
BAE/8107-903/2S	3/4	21	150	2700
BAE/8110-903/2S	1	27	100	1800
BAE/8112-903/2S	1 1/4	35	50	1080
BAE/8115-903/2S	1 1/2	41	60	720
BAE/8120-903/2S	2	53	40	360
BAE/8125-903/2S	2 1/2	63	20	50
BAE/8130-903/2S	3	78	1	45
BAE/8140-903/2S	4	103	1	40
BAE/8150-903/2S	5	129	1	20
BAE/8160-903/2S	6	155	1	24
BAE/8200-903/2S	8	200	1	20

* Our standard Bend has both side sockets



UPVC FITTINGS, NEMA TC3 AMERICAN STANDARD

FABRICATED END BELL

Item Code	Trade Size (mm)	Standard Packs	Bulk Packs (Pcs)
BEB/8120-03	2	60	1080
BEB/8125-03	3	56	1008
BEB/8130-03	3½	45	810
BEB/8140-03	4	24	432
BEB/8150-03	5	1	70
BEB/8160-03	6	1	70
BEB/8200-03	8	1	30



MALE ADAPTER

Item Code	Trade Size	Standard Packs	Bulk Packs (Pcs)
BMA/8105	1/2	100	20,000
BMA/8107	3/4	100	10,000
BMA/8110	1	50	5,000
BMA/8112	1¼	25	2,500
BMA/8115	1½	25	2,500
BMA/8120	2	20	2,000
BMA/8125	2½	20	1,200



INSULATING BUSHINGS PLASTIC (OUT SOURCE MATERIAL)

Item Code	Trade Size (inch)
BC.CRH931	1/2
BC.CRH932	3/4
BC.CRH933	1
BC.CRH934	1 1/4
BC.CRH935	1½
BC.CRH936	2
BC.CRH937	2½



BAHRA LOCK NUT

Item Code	Trade Size (inch)
BLN/8105	1/2
BLN/8107	3/4
BLN/8110	1
BLN/8115	1½
BLN/8120	2
BLN/8130	3
BLN/8140	4
BLN/8160	6



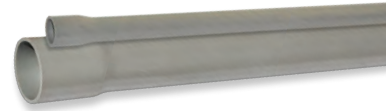
AMERICAN STANDARD

NEMA TC-6 & 8 CONDUIT
NEMA TC-9 FITTINGS

CONDUIT
BC

NYL CHLORIDE MADE IN K.S.A. XP2-R 21011504361151

B20 NEMA TC 6



NEMA TC6 EB20 FOR ENCASED BURIAL CONDUIT

Item Code	Trade Size	Metric Designators	Average outside diameter mm	Module of Elasticity 500,000 psi		Standard Packs	Bulk Packs (Pcs)
				Wall Thickness (Min.) mm	Nominal Weight Kg/m		
BAC/120-EB20	2	53	60.330	1.52	0.419	5	480
BAC/130-EB20	3	78	88.900	1.55	0.635	1	260
BAC/135-EB20	3½	91	101.60	1.83	0.856	1	162
BAC/140-EB20	4	103	114.30	2.08	1.094	1	144
BAC/150-EB20	5	129	141.30	2.62	1.703	1	98
BAC/160-EB20	6	155	168.28	3.18	2.461	1	72

FABRICATED COUPLINGS, NEMA TC9

Item Code	Trade Size	Standard Packs	Bulk Packs (Pcs)
BFC/130-920	3	45	810
BFC/135-920	3½	20	360
BFC/140-920	4	24	432
BFC/150-920	5	4	72
BFC/160-920	6	4	72



*All other sizes are available as per standard

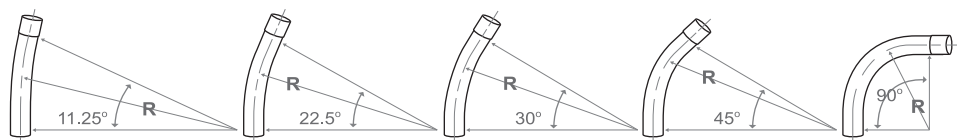
90° ELBOW, NEMA TC9 EB20

Item Code	Trade Size	Metric Designators	Bend Radius	Standard Pack	Bulk Packs
BAE/120-920/2S	2	53	0.46*,0.61 0.91,1.22	20	360
BAE/130-920/2S	3	78	0.46,0.61,0.76 0.91,1.22	1	100
BAE/135-920/2S	3½	91	0.46,0.61 0.91,1.22	1	60
BAE/140-920/2S	4	103	0.918,1.22	1	50
BAE/150-920/2S	5	129	0.91,1.22	1	40
BAE/160-920/2S	6	155	1.22,1.52	1	24



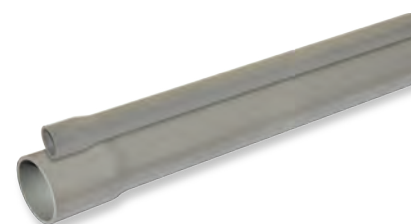
* Our standard Bend has both side sockets

- 9 = 90° Elbow
- 7 = 45° Elbow
- 6 = 30° Elbow
- 5 = 22½° Elbow
- 3 = 11¼° Elbow



FABRICATED END BELL, NEMA TC9 EB20

Item Code	Trade Size	Standard Packs	Bulk Packs (Pcs)
BEB/120-920	2	60	1080
BEB/130-920	3	56	1008
BEB/135-920	3½	45	810
BEB/140-920	4	24	432
BEB/150-920	5	1	70
BEB/160-920	6	1	70



NEMA TC6 DB60 FOR DIRECT BURIAL CONDUIT

Item Code	Trade Size	Metric Designators	Average outside diameter mm	Module of Elasticity 500,000 psi		Standard Packs	Bulk Packs (Pcs)
				Wall Thickness (Min.) mm	Nominal Weight Kg/m		
BAC/120-DB60	2	53	60.330	1.52	0.421	5	480
BAC/130-DB60	3	78	88.900	2.34	0.954	1	260
BAC/135-DB60	3½	91	101.60	2.72	1.267	1	190
BAC/140-DB60	4	103	114.30	3.07	1.608	1	144
BAC/150-DB60	5	129	141.30	3.86	2.498	1	98
BAC/160-DB60	6	155	168.28	4.62	3.561	1	72

FABRICATED COUPLINGS, NEMA TC9 DB60

Item Code	Trade Size	Standard Packs	Bulk Packs (Pcs)
BFC/130-960	3	45	810
BFC/135-960	3½	24	432
BFC/140-960	4	24	432
BFC/150-960	5	1	108
BFC/160-960	6	1	70



*All other sizes are available as per standard

90° ELBOW NEMA TC9 DB60

Item Code	Trade Size	Metric Designators	Bend Radius	Standard Pack	Bulk Packs
BAE/120-960/2S	2	53	0.46*,0.61 0.91,1.22	20	360
BAE/130-960/2S	3	78	0.46,0.61,0.76 0.91,1.22	1	45
BAE/135-960/2S	3½	91	0.46,0.61 0.91,1.22	1	60
BAE/140-960/2S	4	103	0.918,1.22	1	50
BAE/150-960/2S	5	129	0.91,1.22	1	40
BAE/160-960/2S	6	155	1.22,1.52	1	24



* Our standard Bend has both side sockets

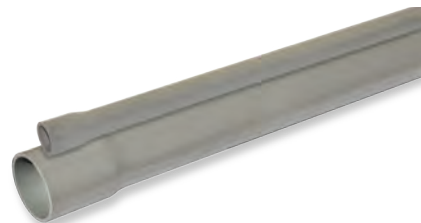
FABRICATED END BELL, NEMA TC9 DB60

Item Code	Trade Size	Standard Packs	Bulk Packs (Pcs)
BEB/120-960	2	60	1080
BEB/130-960	3	56	1008
BEB/135-960	3½	45	810
BEB/140-960	4	24	432
BEB/150-960	5	1	70
BEB/160-960	6	1	70



NEMA TC8 EB35 FOR ENCASED BURIAL CONDUIT

Item Code	Trade Size	Metric Designators	Average outside diameter mm	Module of Elasticity 500,000 psi		Standard Packs	Bulk Packs (Pcs)
				Wall Thickness (Min.) mm	Nominal Weight Kg/m		
BAC/120-EB35	2	53	60.330	1.52	0.421	5	480
BAC/130-EB35	3	78	88.900	1.93	0.790	1	260
BAC/135-EB35	3½	91	101.60	2.24	1.048	1	162
BAC/140-EB35	4	103	114.30	2.54	1.337	1	144
BAC/150-EB35	5	129	141.30	3.20	2.081	1	98
BAC/160-EB35	6	155	168.28	3.86	2.989	1	72



FABRICATED COUPLINGS, NEMA TC9 EB35

Item Code	Trade Size	Standard Packs	Bulk Packs (Pcs)
BFC/130-935	3	45	810
BFC/135-935	3½	24	432
BFC/140-935	4	24	432
BFC/150-935	5	1	162
BFC/160-935	6	1	108



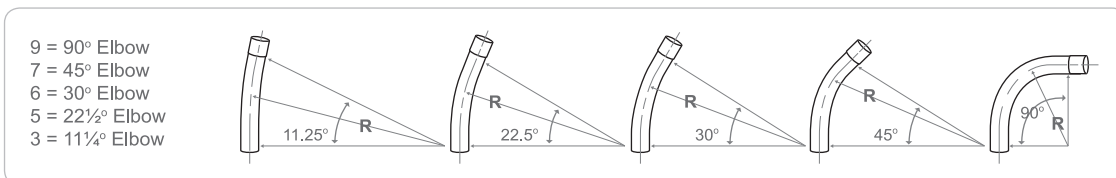
*All other sizes are available as per standard

90° ELBOW, NEMA TC9 EB35

Item Code	Trade Size	Metric Designators	Bend Radius	Standard Pack	Bulk Packs
BAE/120-935/2S	2	53	0.46*,0.61,0.91,1.22	20	360
BAE/130-935/2S	3	78	0.46*,0.61,0.76,1.22	1	100
BAE/135-935/2S	3½	91	0.46*,0.61,0.91,1.22	1	60
BAE/140-935/2S	4	103	0.91*,1.22	1	50
BAE/150-935/2S	5	129	0.91*,1.22	1	40
BAE/160-935/2S	6	155	1.22,1.52	1	24



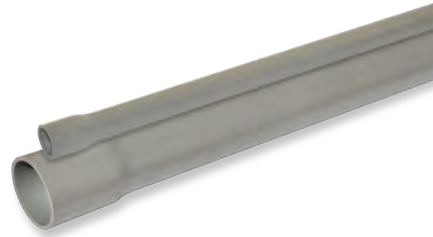
* Our standard Bend has both side sockets



FABRICATED END BELL, NEMA TC9 EB35

Item Code	Trade Size	Standard Packs	Bulk Packs (Pcs)
BEB/120-935	2	60	1080
BEB/130 -935	3	56	1008
BEB/135 -935	3½	45	810
BEB/140 -935	4	24	432
BEB/150 -935	5	1	70
BEB/160 -935	6	1	70





NEMA TC8 DB120 FOR DIRECT BURIAL CONDUIT

Item Code	Trade Size	Metric Designators	Average outside diameter mm	Module of Elasticity 500,000 psi		Standard Packs	Bulk Packs (Pcs)
				Wall Thickness (Min.) mm	Nominal Weight Kg/m		
BAC/110-DB120	1	27	33.810	1.52	0.231	1	1560
BAC/115-DB120	1½	41	48.260	1.52	0.335	1	720
BAC/120-DB120	2	53	60.330	1.96	0.539	1	480
BAC/130-DB120	3	78	88.900	3.00	1.214	1	260
BAC/135-DB120	3½	91	101.60	3.45	1.595	1	190
BAC/140-DB120	4	103	114.30	3.91	2.033	1	144
BAC/150-DB120	5	129	141.30	4.85	3.117	1	98
BAC/160-DB120	6	155	168.28	5.77	4.416	1	72

FABRICATED COUPLING, NEMA TC9 DB120

Item Code	Trade Size	Standard Packs	Bulk Packs (Pcs)
BFC/130-9120	3	45	810
BFC/135-9120	3½	24	432
BFC/140-9120	4	24	432
BFC/150-9120	5	1	108
BFC/160-9120	6	1	70



*All other sizes are available as per standard



90° ELBOW, NEMA TC9 DB120

Item Code	Trade Size	Metric Designators	Bend Radius	Standard Pack	Bulk Packs
BAE/110-9120/2S	1	27	0.146	100	1,800
BAE/115-9120/2S	1½	41	1.52	1	720
BAE/120-9120/2S	2	53	0.46,0.61,0.91,1.22	20	360
BAE/130-9120/2S	3	78	0.46,0.61,0.76,0.9,1.22	1	100
BAE/135-9120/2S	3½	91	0.46,0.61,0.91,1.22	1	60
BAE/140-9120/2S	4	103	0.91,1.22	1	50
BAE/150-9120/2S	5	129	0.91,1.22	1	40
BAE/160-9120/2S	6	155	1.22,1.52	1	24



* Our standard Bend has both side sockets

FABRICATED END BELL, NEMA TC9 DB120

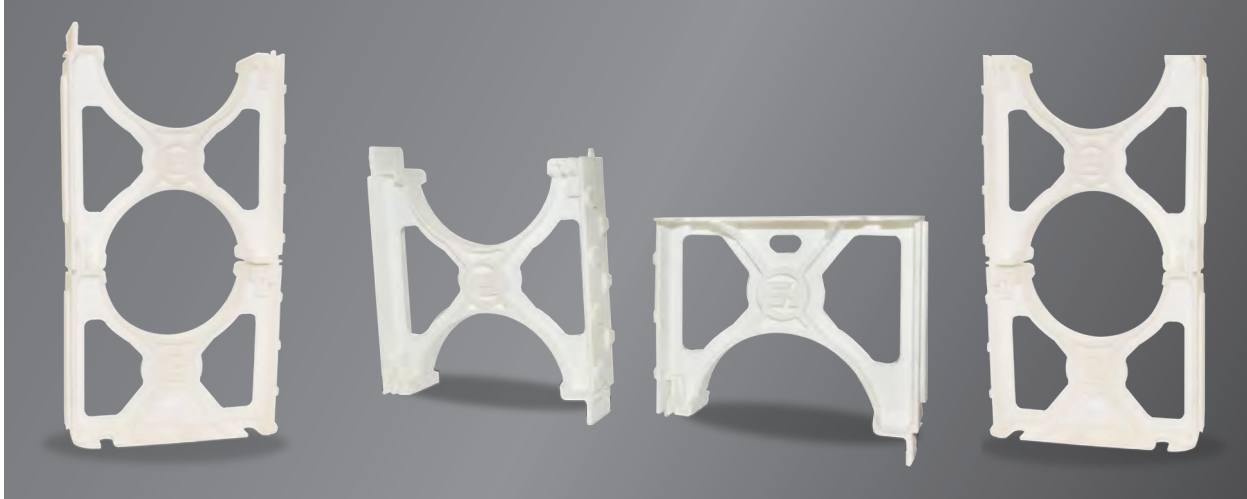
Item Code	Trade Size	Standard Packs	Bulk Packs (Pcs)
BEB/120-9120	2	60	1080
BEB/130-9120	3	56	1008
BEB/135-9120	3½	45	810
BEB/140-9120	4	24	432
BEB/150-9120	5	1	70
BEB/160-9120	6	1	70



CONDUIT ACCESSORIES

BY BC CONDUIT

BC SPACERS & INTERMEDIATE



BC BASE SPACER FOR NEMA STANDARD CONDUIT

Item Code	Trade Size (inch)
BABS/120-2*	2 x 2
BABS/130-2*	3 x 2
BABS/140-2*	4 x 2
BABS/160-2*	6 x 2
BABS/200-2*	8 x 2

***Note:**
First number indicates Trade size of duct,
second number indicates separation between
conduits or ducts.

* Difference between 1.5",2",3"

BC INTERMEDIATE SPACER FOR NEMA STANDARD CONDUIT

Item Code	Trade Size (inch)
BAIS/120-2*	2 x 2
BAIS/130 -2*	3 x 2
BAIS/140 -2*	4 x 2
BAIS/160 -2*	6 x 2
BAIS/200 -2*	8 x 2

BC BASE SPACER FOR SASO STANDARD CONDUIT

Item Code	Trade Size (mm)
BSBS/050	050 x 50
BSBS/075	075 x 50
BSBS/110	110 x 55
BSBS/160	160 x 55
BSBS/200	200 x 55

***Note:** All Spacer standard separation of
50mm and above 110mm size separation
55mm.

BC INTERMEDIATE SPACER FOR SASO STANDARD CONDUIT

Item Code	Trade Size (mm)
BSIS/050	050 x 50
BSIS/075	075 x 50
BSIS/110	110 x 55
BSIS/160	160 x 55
BSIS/200	200 x 55

Official Distributor of:

Carlton[®]

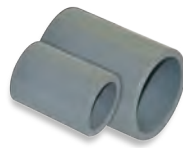
Conduit Accessories

CONDUIT

VINYL CHLORIDE MADE IN K.S.A. XP2-R 21011504361151

EB20 NEMA TC 16 T

**STANDARD
COUPLING**



Item code	Trade Size	STN CTN
BC.E940D	1/2	150
BC.E940E	3/4	100
BC.E940F	1	50
BC.E940G	1 1/4	30
BC.E940H	1 1/2	25
BC.E940J	2	30
BC.E940K	2 1/2	20
BC.E940L	3	25
BC.E940N	4	15
BC.E940P	5	8
BC.E940R	6	5

**MALE TERMINAL
ADAPTER**



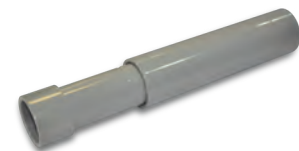
Item code	Trade Size	STN CTN
BC.E943D	1/2	2,000
BC.E943E	3/4	2,700
BC.E943F	1	600
BC.E943G	1 1/4	1080
BC.E943H	1 1/2	300
BC.E943J	2	360
BC.E943K	2 1/2	40
BC.E943L	3	40
BC.E943N	4	30
BC.E943P	5	20
BC.E943R	6	10

**FEMALE TERMINAL
ADAPTER**



Item code	Trade Size	STN CTN
BC.E942D	1/2	150
BC.E942E	3/4	100
BC.E942F	1	50
BC.E942G	1 1/4	30
BC.E942H	1 1/2	25
BC.E942J	2	30
BC.E942K	2 1/2	20
BC.E942L	3	25
BC.E942N	4	15
BC.E942P	5	08
BC.E942R	6	06

**COUPLING
END**



Item code	Trade Size	STN CTN
BC.E945D	1/2	20
BC.E945E	3/4	15
BC.E945F	1	10
BC.E945G	1 1/4	05
BC.E945H	1 1/2	05
BC.E945J	2	15
BC.E945K	2 1/2	10
BC.E945L	3	10
BC.E945N	4	05
BC.E945P	5	01
BC.E945R	6	01



END BELLS

Item code	Trade Size	STN CTN
BC.E997F	1	50
BC.E997G	1¼	35
BC.E997H	1½	30
BC.E997J	2	40
BC.E997K	2½	30
BC.E997L	3	50
BC.E997N	4	30
BC.E997P	5	15
BC.E997R	6	10
BC.E997T	8	3



END CAP

Item code	Trade Size	STN CTN
BC.E958D	½	100
BC.E958E	¾	100
BC.E958F	1	75
BC.E958G	1¼	40
BC.E958H	1½	30
BC.E958J	2	25
BC.E958K	2½	10
BC.E958L	3	10
BC.E958N	4	5
BC.E958P	5	5
BC.E958R	6	5



PVC LOCK NUT

Item code	Trade Size	STN CTN
BC.LT9LD	½	1200
BC.LT9LE	¾	700
BC.LT9LF	1	600

Spacers provide stability, constant separation reduce direct stress for duct materials encased in concrete, and direct bury applications.

Non-metallic Spacers are designed specifically for use with nonmetallic duct, with maximum O.D. dimensions as specified in NEMA TC-2, TC-6 & 8 and ASTM F512. The innovative vertical and horizontal interlocking design has pointed joining slots with maximum tolerances for easy job site assembly.

IMPORTANT:

The use of duct spacers for direct burial may result in excessive point deflections unless proper design engineering is applied, such as the proper compaction of the appropriate backfill material.



BASE SPACERS

Part No.	Size*	A	C	D (Dia.)	Std. Ctn. Qty.
S288JHN	2x1½	4.25	4.12	2.50	100
S288JJN	2x2	4.25	4.62	2.50	100
S288JLN	2x3	4.25	5.62	2.50	100
S288LHN	3x1½	4.81	5.25	3.63	90
S288LJN	3x2	4.81	5.75	3.63	80
S288LLN	3x3	4.81	6.75	3.63	60
S288NFN	4x1	5.31	5.75	4.63	70
S288NHN	4x1½	5.31	6.25	4.63	50
S288NJN	4x2	5.31	6.75	4.63	50
S288NLN	4x3	5.31	7.75	4.63	60
S288PHN	5x1½	5.84	7.31	5.69	50
S288PJN	5x2	5.84	7.81	5.69	60
S288PLN	5x3	5.84	8.81	5.69	50
S288RHN	6x1½	6.38	8.38	6.75	50
S288RJN	6x2	6.38	8.88	6.75	50
S288RLN	6x3	6.38	9.88	6.75	40
S288SHN	8x1½	10.14	10.30	8.75	30

INTERMEDIATE SPACERS

Part No.	Size*	B	C	D (Dia.)	Std. Ctn. Qty.
S289JHN	2x1½	3.88	4.12	2.50	120
S289JJN	2x2	4.38	4.62	2.50	100
S289JLN	2x3	5.38	5.62	2.50	80
S289LHN	3x1½	5.01	5.25	3.63	100
S289LJN	3x2	5.51	5.75	3.63	80
S289LLN	3x3	6.51	6.75	3.63	60
S289NFN	4x1	5.51	5.75	4.63	70
S289NHN	4x1½	6.01	6.25	4.63	60
S289NJN	4x2	6.51	6.75	4.63	60
S289NLN	4x3	7.51	7.75	4.63	50
S289PHN	5x1½	7.07	7.31	5.69	50
S289PJN	5x2	7.57	7.81	5.69	50
S289PLN	5x3	8.57	8.81	5.69	30
S289RHN	6x1½	8.14	8.38	6.75	50
S289RJN	6x2	8.64	8.88	6.75	40
S289RLN	6x3	9.64	9.88	6.75	30
S289SHN	8x1½	10.64	10.76	8.75	30

SUGGESTED SPECIFICATION

(Duct) (Conduit) bank shall be encased in concrete with at least three inches of concrete at the top and bottom and two inches on each side. A horizontal and vertical separation between the ducts of ____* inches shall be maintained by installing Carlon high impact spacers with horizontal and vertical locking intervals of ____** feet.

*Standard Separations of 1", 1½", 2", and 3" are available.

**Preferred interval between spacer assemblies is 8 to 10 feet.

INSTALLTION NOTE

The Spacers and Rebar Holder are designed with a dovetail tongue and groove feature for easy installation.

If required to permanently fix the position of a group of Spacers and/or Rebar Holder, the following are recommended procedures:

1. Use Carlon Quick-set Cement glue during assembly or spot glue after assembly to secure.
2. During assembly, deform the edge of the tongue or groove portion of the dovetail slide with a pair of pliers or similar tool. This deformation will create an interference, restricting movement.
3. An assembled system may be wired together for additional support.

IMPORTANT

1. The use of duct spacers for direct burial may result in excessive point deflections unless proper design engineering is applied, such as the proper compaction of the appropriate backfill material.
2. Carlon is not responsible for Snap-Loc Spacers used in direct bury applications... design engineers and contractors are responsible for the design of the installation.



METALLIC SWITCH BOXES

BRITISH STANDARDS

Standard:	BS 4662 / 2006		
Voltage Rating:	120-440V AC 50/60 Hz		
Degree of protection:	IP40 (NEMA 1)		
Material:	Hot-Dipped Galvanized Steel Sheet (Corrosion Resistant)		
Steel Thickness:	0.9mm / 1.1mm		
Knockouts:	Ø 20.5 / Ø 26.5		
Features / Varieties:	<ul style="list-style-type: none"> - With Brass Earth Terminal - With Adjustable Lug - With Coupler(s) - With Provision for Earth - With Brass Earth Terminal and Adjustable Lug - Without Earth Terminal 		
Sizes:	<ul style="list-style-type: none"> - 72(h) x 72(w) x 35(d)mm - 72(h) x 72(w) x 47(d)mm - 72(h) x 132(w) x 35(d) - 72(h) x 132(w) x 47 (d)m 		

Item Code	Description
BC.BMB7735091	Metal Box 7X7CM,35mm(D), 0.9mm (Th), 26.5 mm Dia (KO) Adj Type, without Earth
BC.BMB71435091	Metal Box 7X14CM,35mm(D), 0.9mm (Th), 26.5 mm Dia (KO) Adj Type, without Earth
BC.BMB7735091/E	Metal Box 7X7CM,35mm(D), 0.9mm(Th), 26.5 mm Dia (KO) Adj Type, with Brass Earth
BC.BMB71435091/E	Metal Box 7X14CM,35mm(D), 0.9mm(Th), 26.5 mm Dia (KO) Adj Type, with Brass Earth
BC.BMB7747091	Metal Box 7X7CM,47mm(D), 0.9mm(Th), 26.5 mm Dia (KO) Adj Type, without Earth
BC.BMB71447091	Metal Box 7X14CM,47mm(D), 0.9mm(Th), 26.5 mm Dia (KO) Adj Type, without Earth
BC.BMB7747091/E	Metal Box 7X7CM,47mm(D), 0.9mm(Th), 26.5 mm Dia (KO) Adj Type, with Brass Earth
BC.BMB71447091/E	Metal Box 7X14CM,47mm(D), 0.9mm(Th), 26.5 mm Dia (KO) Adj Type, with Brass Earth
BC.BMB7735111	Metal Box 7X7CM,35mm(D), 1.1mm(Th), 26.5 mm Dia (KO) Adj Type, without Earth
BC.BMB71435111	Metal Box 7X14CM,35mm(D), 1.1mm(Th), 26.5 mm Dia (KO) Adj Type, without Earth
BC.BMB7735111/E	Metal Box 7X7CM,35mm(D), 1.1mm(Th), 26.5 mm Dia (KO) Adj Type, with Brass Earth
BC.BMB71435111/E	Metal Box 7X14CM,35mm(D), 1.1mm(Th), 26.5 mm Dia (KO) Adj Type, with Brass Earth
BC.BMB7747111	Metal Box 7X7CM,47mm(D), 1.1mm(Th), 26.5 mm Dia (KO) Adj Type, without Earth
BC.BMB71447111	Metal Box 7X14CM,47mm(D), 1.1mm(Th), 26.5 mm Dia (KO) Adj Type, without Earth
BC.BMB7747111/E	Metal Box 7x7cm, 47mm(D), 1.1mm(Th), 26.5 mm Dia (KO) Adj Type, with Brass Earth
BC.BMB71447111/E	Metal Box 7X14CM,47mm(D), 1.1mm(Th), 26.5 mm Dia (KO) Adj Type, with Brass Earth

ADDITIONAL INFORMATION

BMB >> Bahra Metal Box, (D). >> Depth, TH >> Thickness, 7 >> Height, 7 >> Width, 14>> Width, E >> With Brass Earth (Ea >> with Earth)

Standard:	BS 4662 / 2006
Voltage Rating:	120-440V AC 50/60 Hz
Degree of protection:	IP40 (NEMA 1)
Material:	Hot-Dipped Galvanized Steel Sheet (Corrosion Resistant)
Steel Thickness:	0.9mm / 1.1 mm
Knockouts:	Ø 20.5 / Ø 26.5
Features / Varieties:	<ul style="list-style-type: none"> - With Brass Earth Terminal - With Adjustable Lug - With Coupler(s) - With Provision for Earth
Sizes:	<ul style="list-style-type: none"> - 72(h) x 72(w) x 35(d)mm - 72(h) x 72(w) x 47(d)mm - 72(h) x 132(w) x 35(d)mm - 72(h) x 132(w) x 47(d)mm

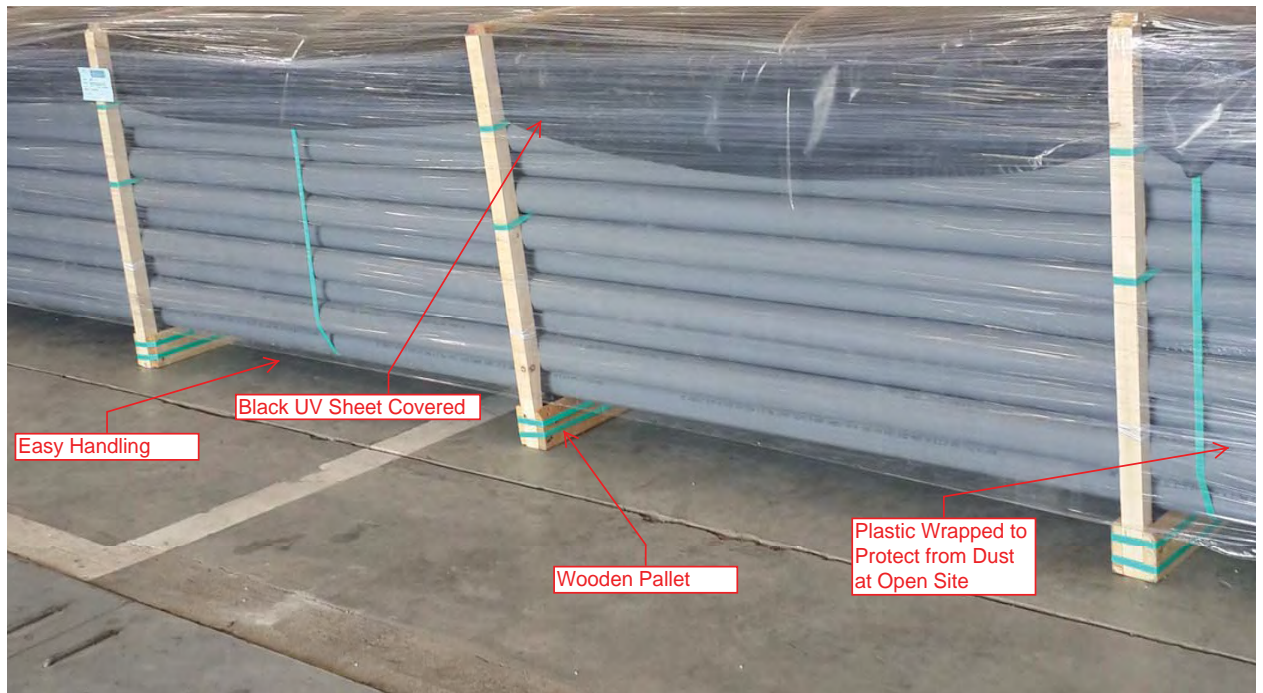


Item Code	Description
BC.BMB7735092	Metal Box 7X7CM,35mm(D), 0.9mm(Th) 20.5 / Ø 26.5 DIA (KO) Adj Type, without Earth
BC.BMB71435092	Metal Box 7X14CM,35mm(D), 0.9mm(Th), 20.5 / Ø 26.5 DIA (KO) Adj Type, without Earth
BC.BMB7735092/E	Metal Box 7X7CM,35mm(D), 0.9mm(Th), 20.5 / Ø 26.5 DIA (KO) Adj Type, with Brass Earth
BC.BMB71435092/E	Metal Box 7X14CM,35mm(D), 0.9mm(Th), 20.5 / Ø 26.5 DIA (KO) Adj Type, with Brass Earth
BC.BMB7747092	Metal Box 7X7CM,47mm(D), 0.9mm(Th), 20.5 / Ø 26.5 DIA (KO) Adj Type, without Earth
BC.BMB71447092	Metal Box 7X14CM,47mm(D), 0.9mm(Th), 20.5 / Ø 26.5 DIA (KO) Adj Type, without Earth
BC.BMB7747092/E	Metal Box 7X7CM,47mm(D), 0.9mm(Th), 20.5 / Ø 26.5 DIA (KO) Adj Type, with Brass Earth
BC.BMB71447092/E	Metal Box 7X14CM,47mm(D), 0.9mm(Th), 20.5 / Ø 26.5 DIA (KO) Adj Type, with Brass Earth
BC.BMB7735112	Metal Box 7X7CM,35mm(D), 1.1mm(Th) 20.5 / Ø 26.5 DIA (KO) Adj Type, without Earth
BC.BMB71435112	Metal Box 7X14CM,35mm(D), 1.1mm(Th), 20.5 / Ø 26.5 DIA (KO) Adj Type, without Earth
BC.BMB7735112/E	Metal Box 7X7CM,35mm(D), 1.1mm(Th), 20.5 / Ø 26.5 DIA (KO) Adj Type, with Brass Earth
BC.BMB71435112/E	Metal Box 7X14CM,35mm(D), 1.1mm(Th), 20.5 / Ø 26.5 DIA (KO) Adj Type, with Brass Earth
BC.BMB7747112	Metal Box 7x7cm, 47mm(D), 1.1mm(Th),20.5 / Ø 26.5 DIA (KO) Adj Type, without Earth
BC.BMB71447112	Metal Box 7x14cm, 47mm(D), 1.1mm(Th),20.5 / Ø 26.5 DIA (KO) Adj Type, without Earth
BC.BMB7747112/E	Metal Box 7x7cm, 47mm(D), 1.1mm(Th),20.5 / Ø 26.5 DIA (KO) Adj Type, with Brass Earth
BC.BMB71447112/E	Metal Box 7x14cm, 47mm(D), 1.1mm(Th),20.5 / Ø 26.5 DIA (KO) Adj Type, with Brass Earth

ADDITIONAL INFORMATION

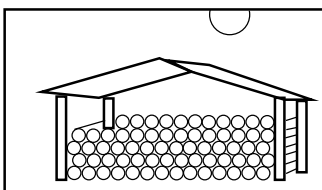
BMB >> Bahra Metal Box, (D) >> Depth, TH >> Thickness, 7 >> Height, 7 >> Width, 14 >> Width, / E >> With Brass Earth (Ea >> with Earth)

STORAGE - UV PROTECTION



STORAGE

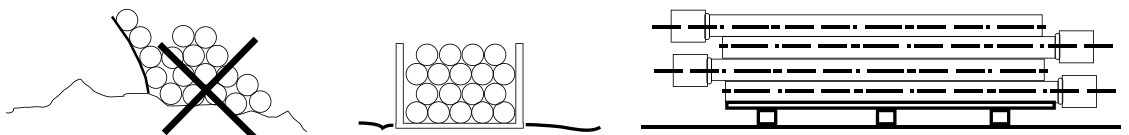
UV-PROTECTION



PVC Conduit pipes should be adequately supported during handling and storage, pipes should not come into contact with sharp objects such as corners of truck beds, buildings, forklift trucks or other obstacles on the ground. Forklifts forks must never be inserted into the fields of pipes as a means of lifting or moving PVC pipes to be stacked in layers with socket, placed at alternative ends with socket protruding outside.

PVC pipes should not be exposed to solar radiation for any length of time and ultraviolet rays which may cause discoloration. It is recommended to stock pipes in cool ventilated and shaded places.

For field storage, where racks are not available, the ground should be leveled flat, free from coarse stones and dry. Pipes stored should not exceed 1.5 meters in height.



STORAGE - UV PROTECTION

- UPVC pipes should be provided with adequate support at all times.
- Pipes should not be stacked in large piles, especially in warm temperature conditions.
- For long term storage, pipe racks should provide continuous support.
- Closer supports will be required for sizes below 160mm. In such pipe racks, pipes may be stored not more than seven layers.
- For temporary storage in the field, where racks are not provided, the ground should be level and free from loose stones.
- UPVC pipes should always be stored in the shade to avoid ultra-violet rays.
- Special care must be taken in transit, handling and storage to avoid damage to the ends.



15 YEARS PRODUCT GUARANTY

BC Conduit shall guaranty and warranty the supplied UPVC conduits and accessories for a period of 15 years for indoor use only, from the date of delivery against the products malfunction due to material, workmanship and manufacturing defects.

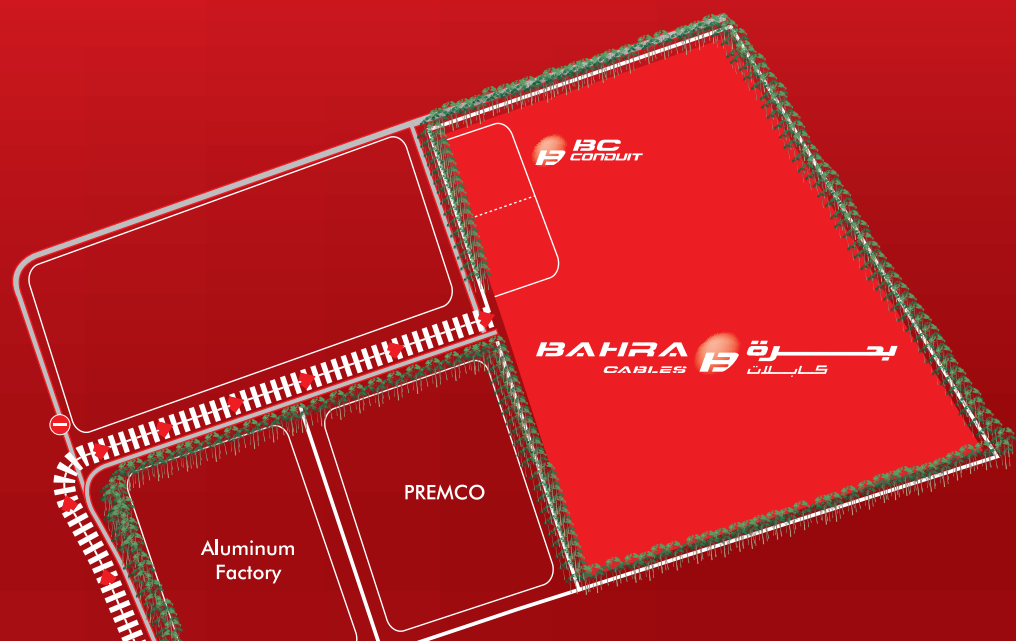
BC Conduit guaranty and warranty shall not apply if the customer uses or installs the products improperly, when such an improper use is judged using the national and /or internationally recognized standards and codes of the electrical Industry.

The Guaranty shall not extend to items not manufactured by BC Conduit, or to any damages or defects resulting from the use of products in a manner other than what these intentionally designed for, nor the mishandling or misuse during their transport or storage.



ISO 9001:2008





CPC INDUSTRIAL PARK



CABLE MANAGEMENT SYSTEM

CONDUITS, FITTINGS & ACCESSORIES



BEST QUALITY PRODUCT WITH EUROPEAN TECHNOLOGY



AVAILABLE ALL CONDUIT AND FITTING ACCORDING BELOW STANDARDS

IEC 60423	UL 651	SASO 14-15
IEC 63186-1	NEMA STANDARD:	GS(675-676)
IEC 60670-1	TC2, TC3	GS 32,33/2007
BS 3506:1969	TC6, TC8 & TC9	DIN 8061/8062



B.C. for Manufacturing Plastic Electrical Conduits

ص.ب. ٥٩٨٩ جدة ٢١٤٣٢، المملكة العربية السعودية، هاتف: +٩٦٦ ١٢ ٥٩١ ١١١٥ فاكس: +٩٦٦ ١٢ ٥٩١ ٥٦٨٣

P O Box 5989, Jeddah 21432, Saudi Arabia, Tel: +966 12 591 1115, Fax: +966 12 591 5683

conduit@bahra-cables.com

Customer Service: 8001160111